



You will need:



I do not own Jingle, Animal Crossing, or any of the Nintendo related terms/ideas in this craft. This is a free craft, visit [navipapercraft.com](http://navipapercraft.com) for more. 2010.

The template is available in both a lined and unlined format. There is also an alternate fourth page with a grassy/snow stand instead of the default dirt/snow.

You only need to print one fourth page, regardless of which you choose.

For best results, follow this general build order:

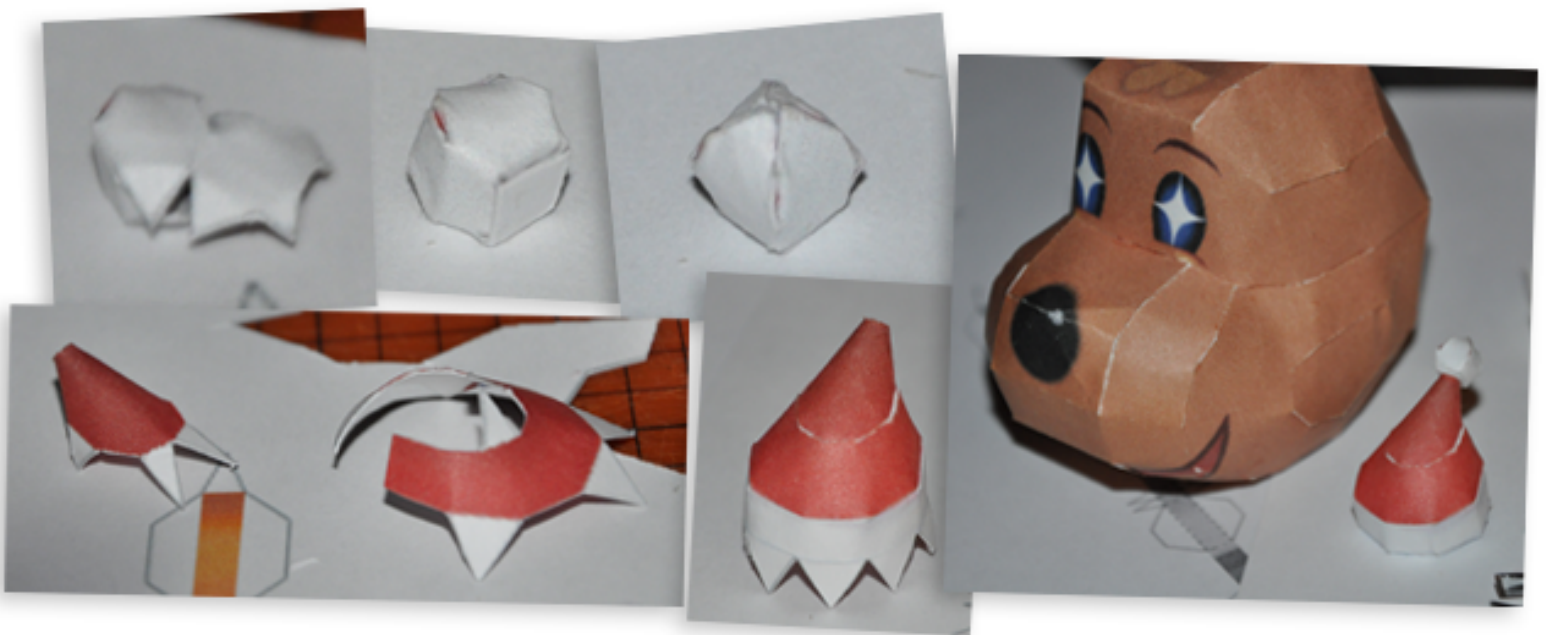
1. Cut and shape pieces 01 and 02, then glue each piece and join them.



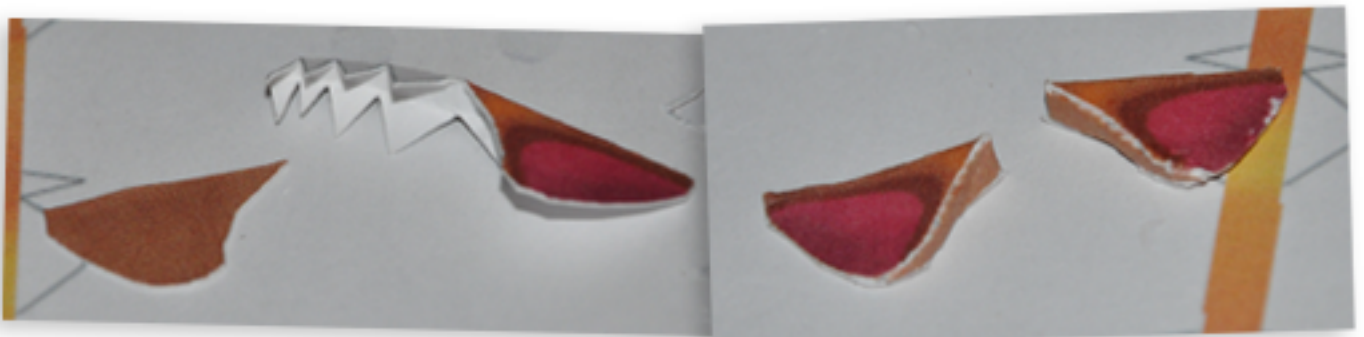
2. Cut, shape, and attach piece 03, gluing the indicated flaps last. Add the last small piece from the first page of the template to finish the head.



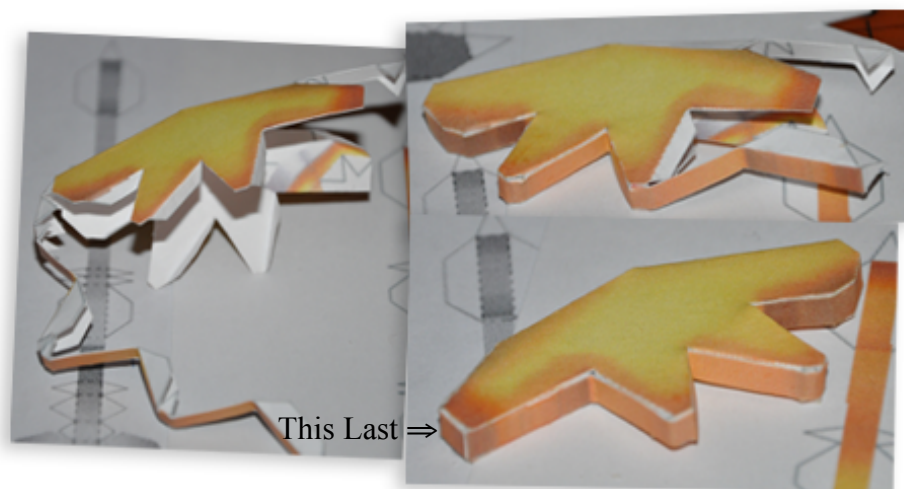
3. Cut, shape, and glue pieces 04 through 08.



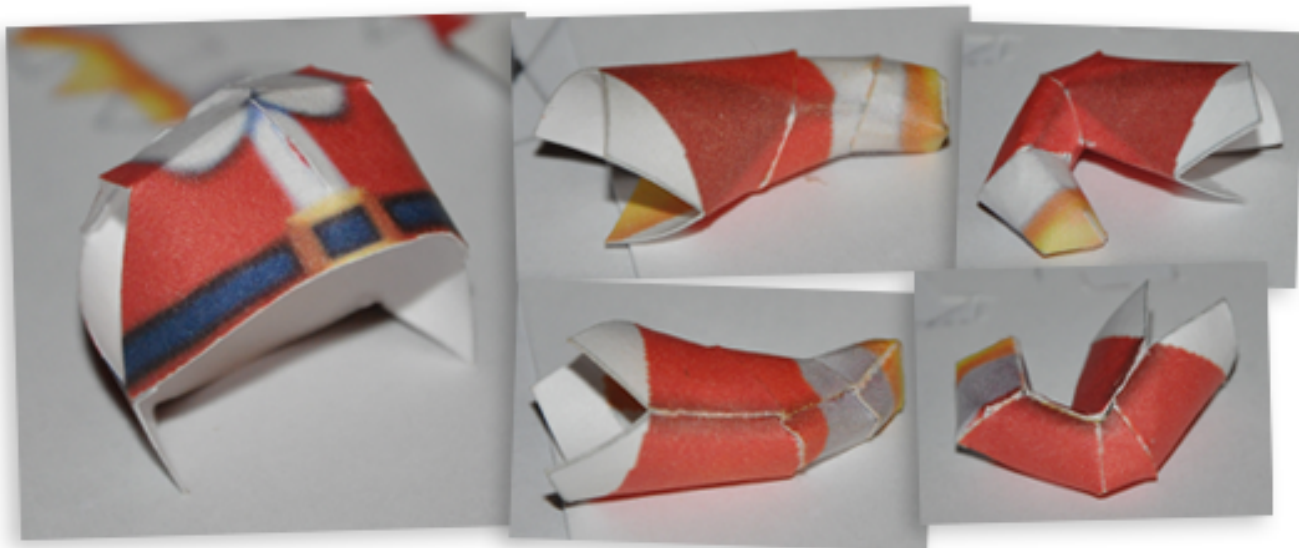
4. Pieces 09 and 10 are ears, it is easiest to glue the side strips last, as below:



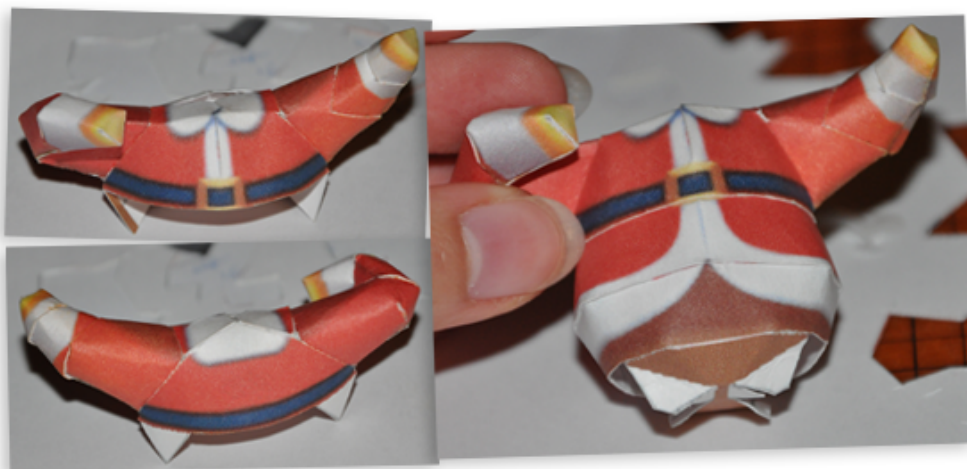
5. Pieces 11 and 12 are the antlers, cut and shape them, then glue both large faces to the side band as you work around the shape. Leave the small square that will be glued to the head for last.



6. Cut and glue part 13, the upper body, then work through pieces 14 to 19 to construct the arms. Follow the number sequence to build from the "hands" to the shoulders.



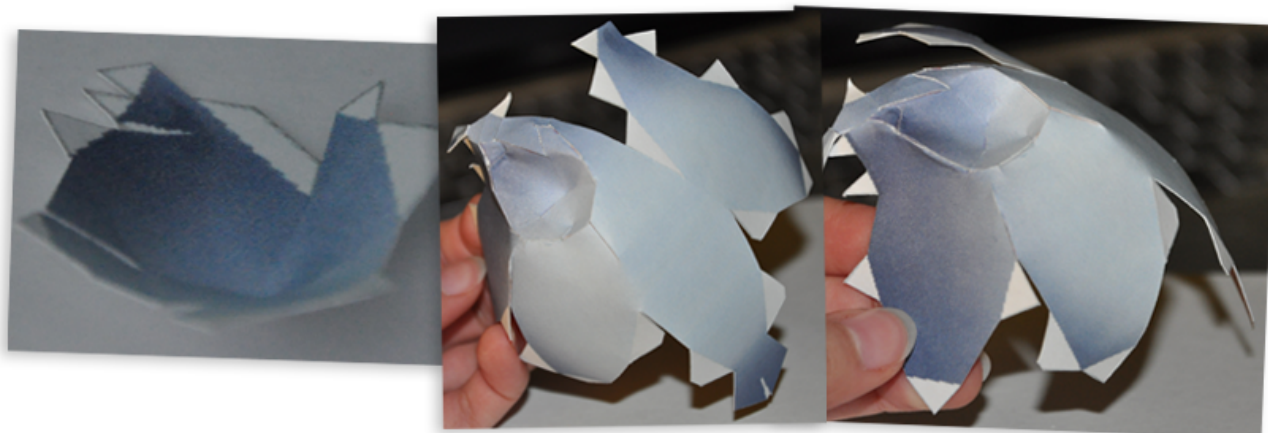
7. Attach the arms, then continue by attaching pieces 21 and 22.



8. Cut, shape, and attach pieces 23 to 26 to complete the body. Work from the existing body down towards the feet, closing the base of the feet last.



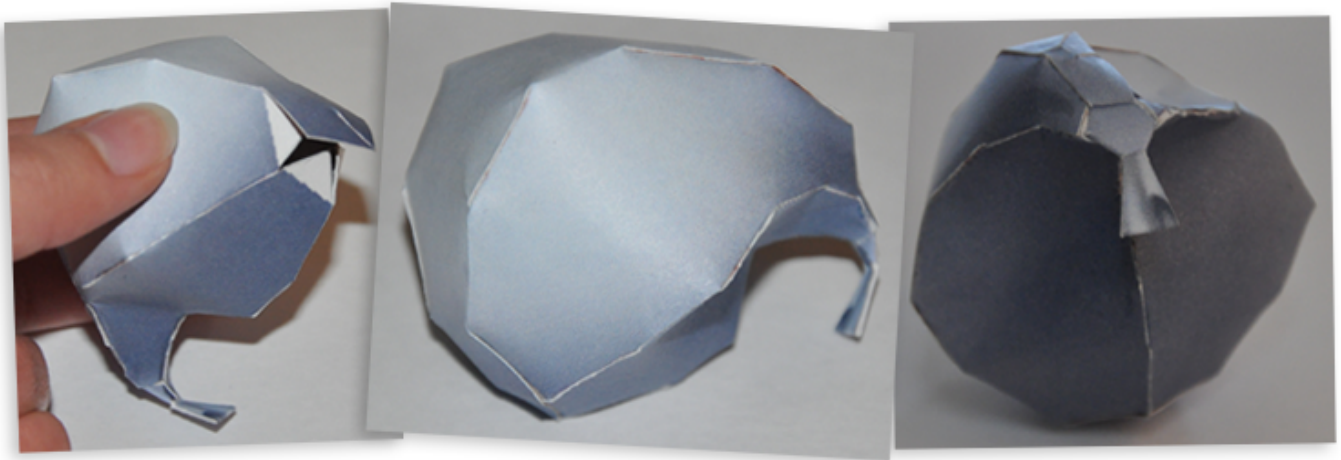
9. Piece 27 is an indentation in the bag, so that it can fit beneath Jingle's head when it goes over his shoulder. Cut and glue it first, then cut and shape 28 and attach the two. This part is a bit 'fiddly', but will be obscured by the head in the end. Cut piece 29, double it over, and attach it to 28. Begin gluing 28 from the middle of the bag towards 29.



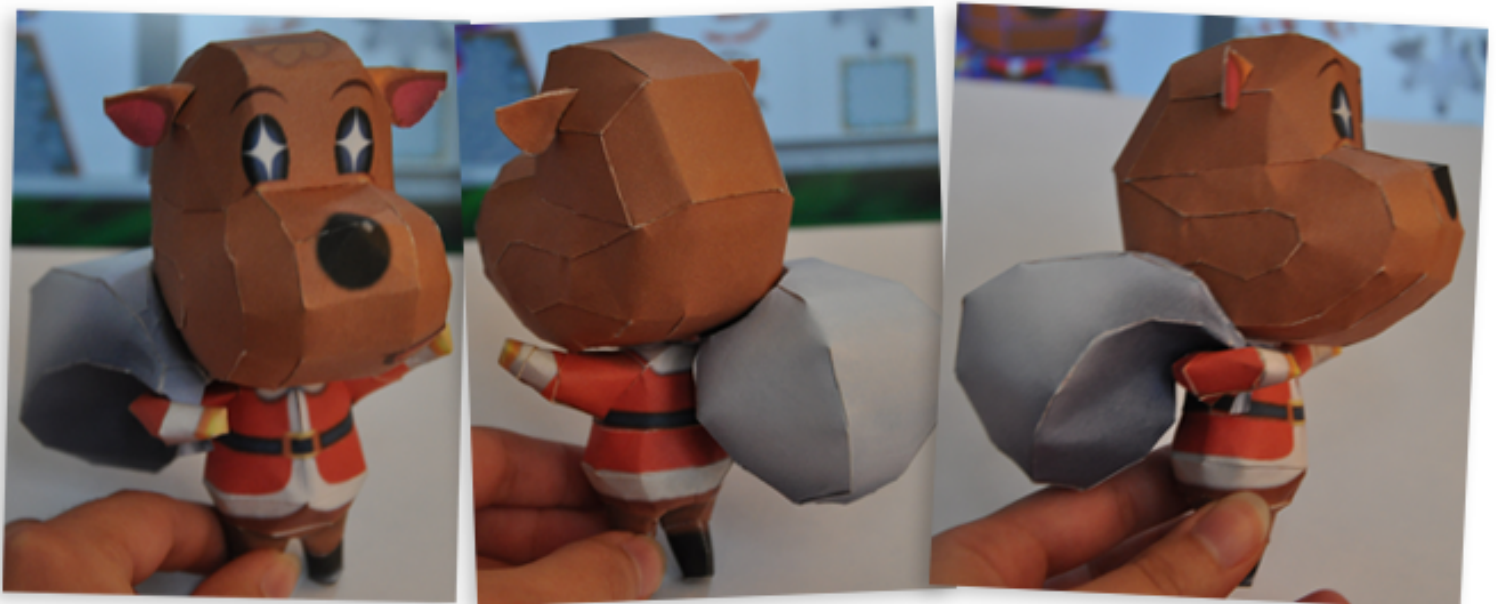
10. Cut 30, shape and glue it onto 28. The neck of the bag will close like a zipper, with each flap interlocking. Be sure to glue the next, larger flap and the three small zipper flaps at the same time, otherwise it will pull apart.



11. Then continue by working in the other direction and gluing the flaps from the center of the bag towards the still open end. Glue the tiny flap in the lowest face, then glue this down to the rest of the bag to seal it.



12. Pieces complete! (Now to put them together... The head, body, and bag should all be glued to each other at the same time; inserting the bag after connecting the head and body causes too much tension and will pull the two apart again. Dry fit the pieces first, and find a way to set your hands so that you can hold them together to let the glue set. I found that it was most effective to hold the head and body with my right hand, and place the bag with my left. Apply glue to the part of the bag that will contact the side of the head, and along the ridge immediately below the bag's neck. Also glue one of the matching diamond shapes on the underside of the head and the top of the body (these will be pushed together). Then, go for it!



13. Lastly, attach the hat, placing it so that the end line of the hair is just covered. Attach the ears on the lower indications on the head, and the antlers directly above the ears on the other indications. Cut out the stand and glue Jingle to it. Primarily glue down his right foot, as the left intentionally tilts to the side a bit as part of his waving pose.



Great Job!

I hope you enjoy your Jingle craft,  
and have a very Merry Christmas!