



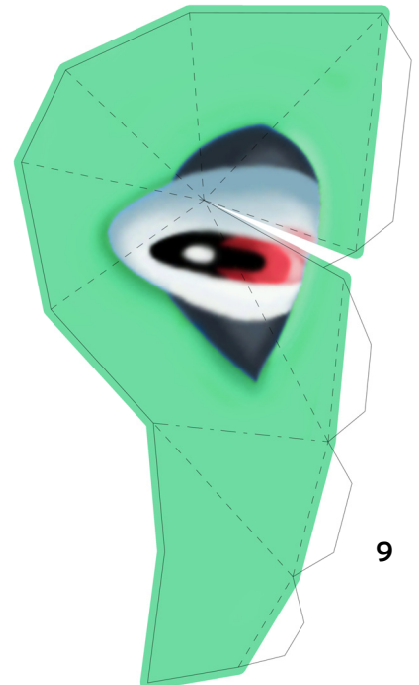
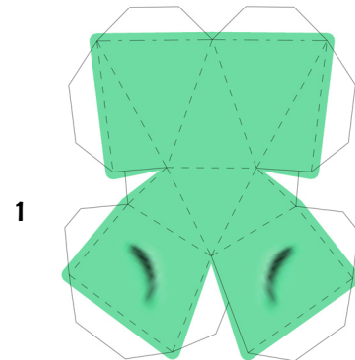
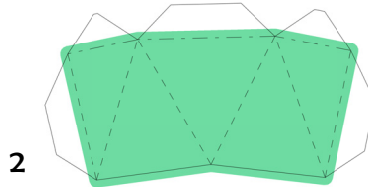
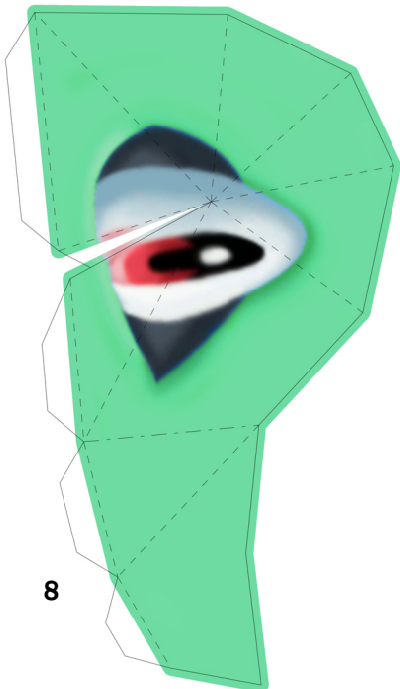
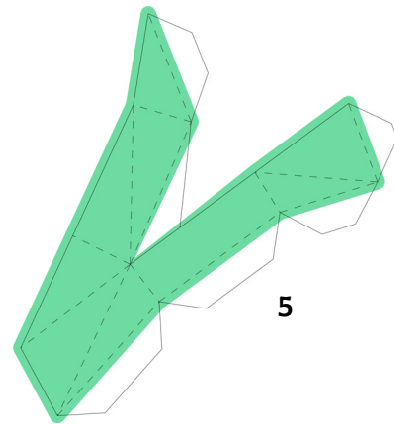
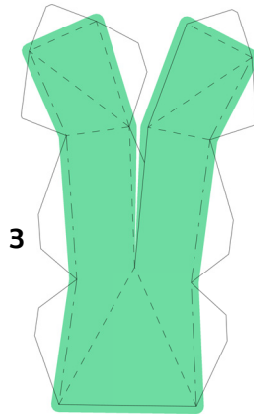
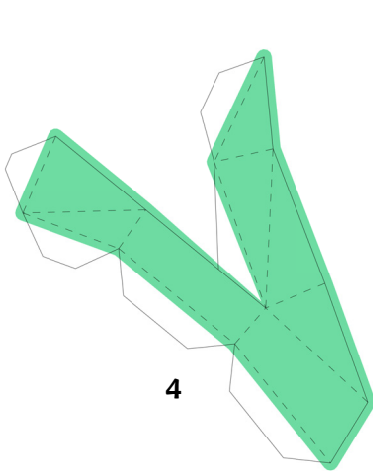
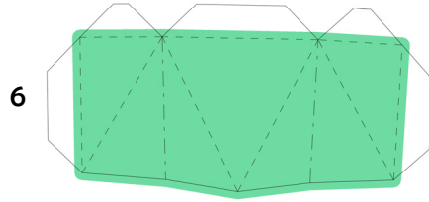
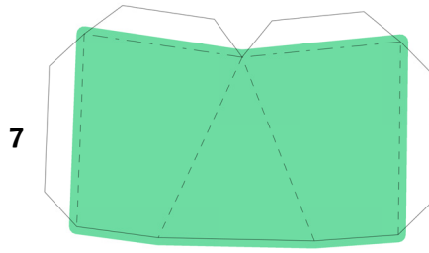
TOTODILE

3D EDITING BY BRANDON

TEPLATE BY PAPERBUFF

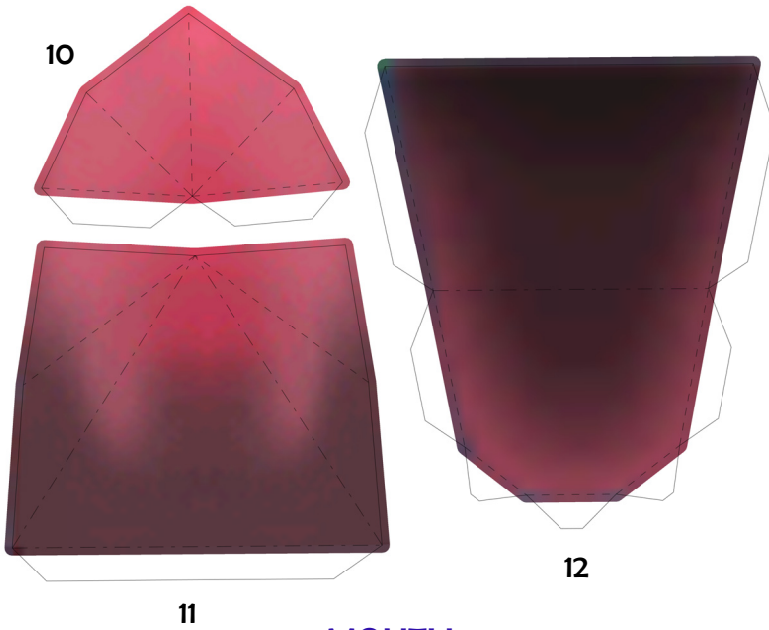
Paper Pokés
www.pokemonpapercraft.com

HEAD AND FACE



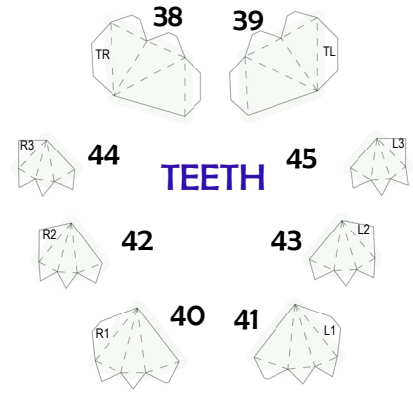
NOSE

Start with the nose and work your way around it.
(Let the numbers guide you.)



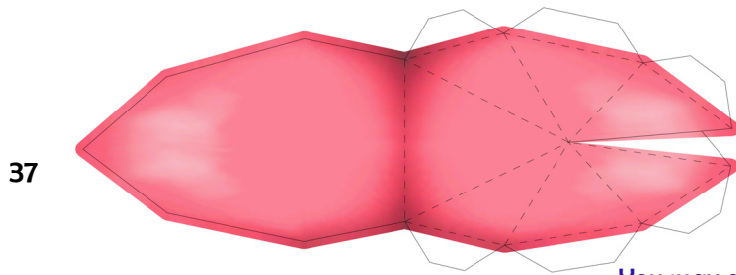
MOUTH

Build the roof of the mouth by gluing piece 10 to 11.
 Then glue this piece to the finished part of the head.
 Then attach the bottom of the mouth (glue 12 to 11).



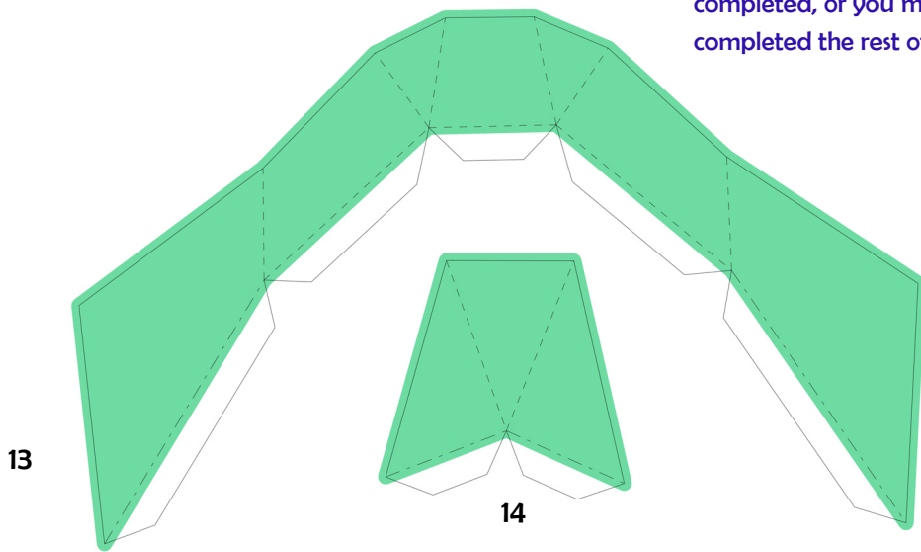
TEETH

TR - top right
 TL - top left
 R1, R2, R3 - bottom right (front to back)
 L1, L2, L3 - bottom left (front to back)



TONGUE

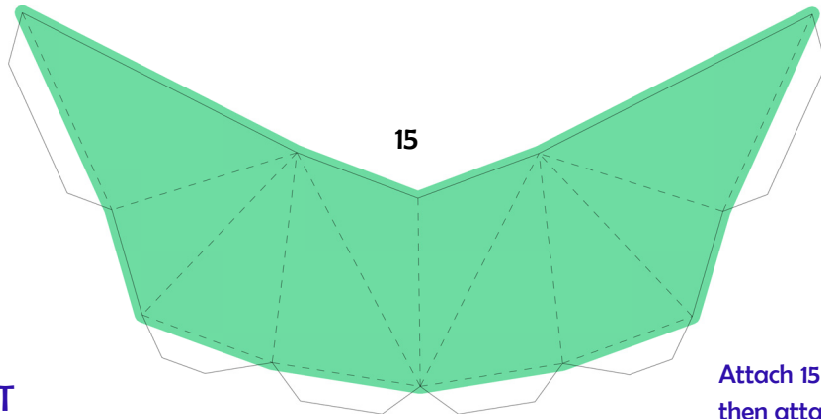
You may assemble and attach the tongue and teeth anytime the head has been completed, or you may wait till you've completed the rest of the model.



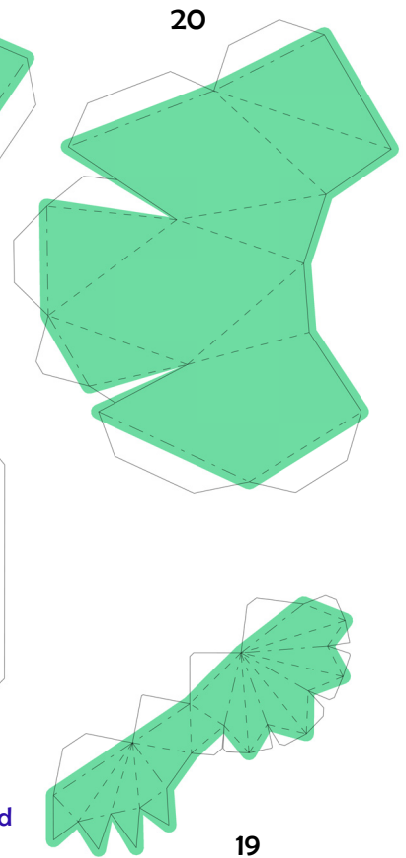
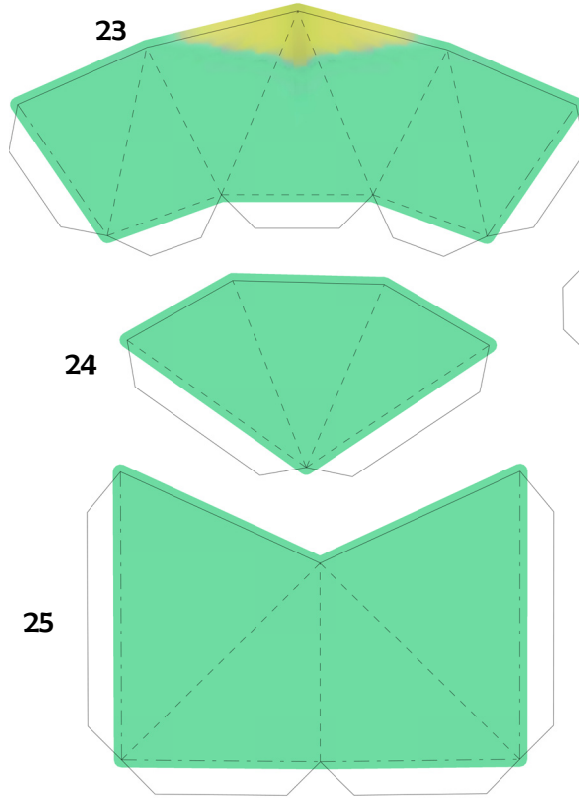
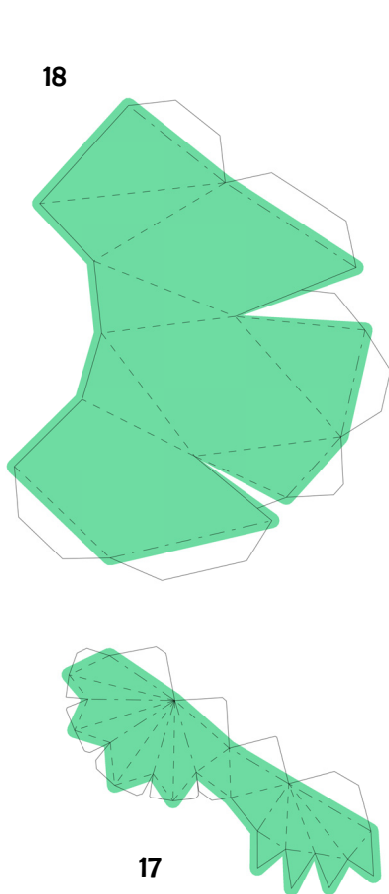
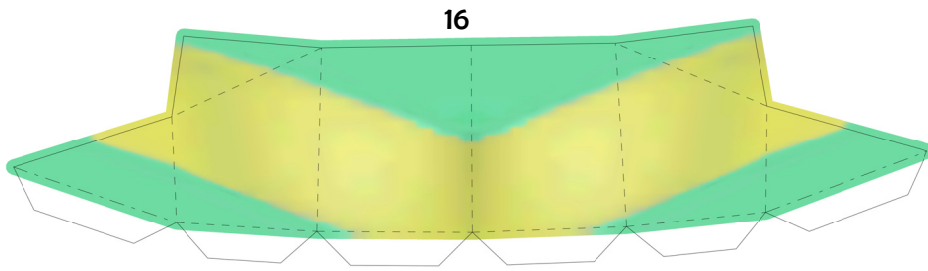
CHIN

Complete the head by assembling the chin pieces, then move on to the body.

BODY FRONT



Attach 15 and 16 to the head, then attach the assembled arms.



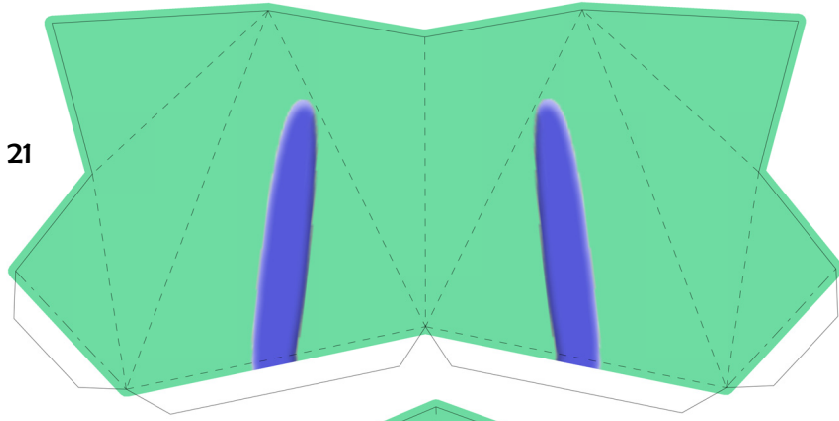
In building the hands, make sure to score and fold the fingers neatly, then fold it over onto itself. Then build the arm around the hand.

RIGHT ARM AND FINGERS

LEFT ARM AND FINGERS

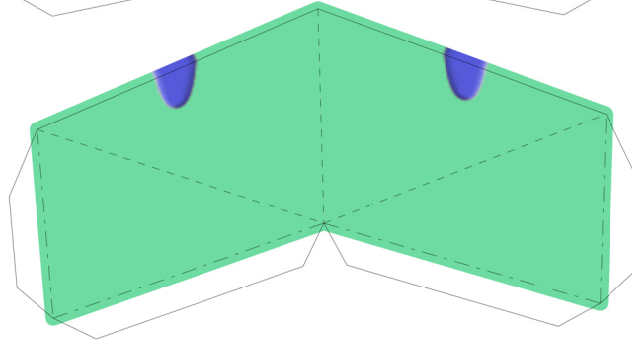
BODY BACK

21

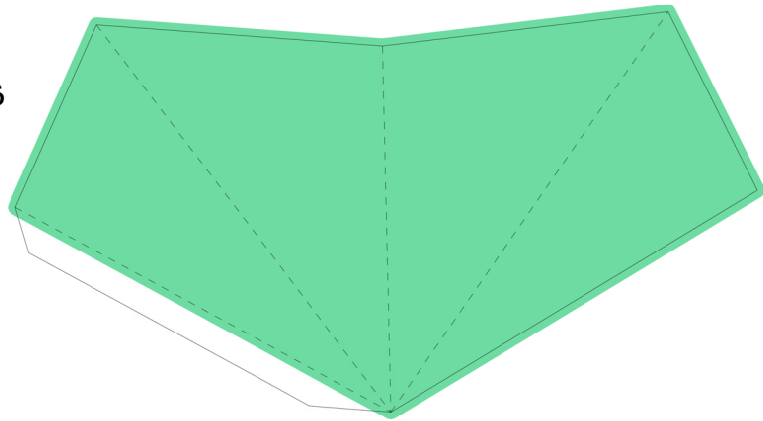


Attach 21 and 22 after attaching the arms. Move on to pieces 23 to 26. Then move on to the legs and feet.

22



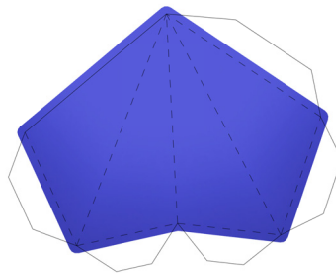
26



TAIL

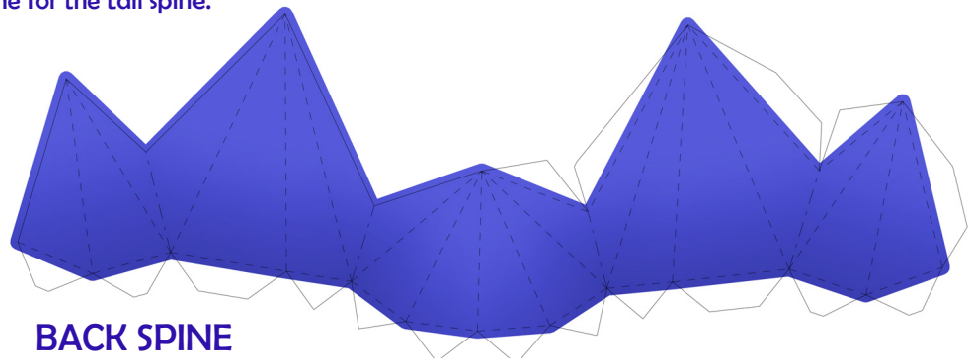
TAIL SPINE

Score and fold the spines neatly and glue to Totodile's back. Do same for the tail spine.

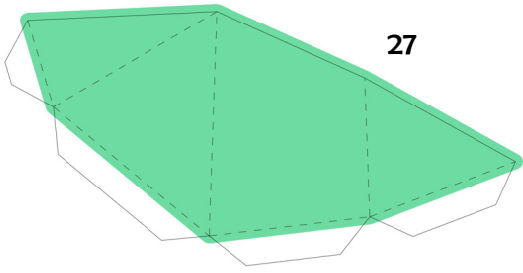


36

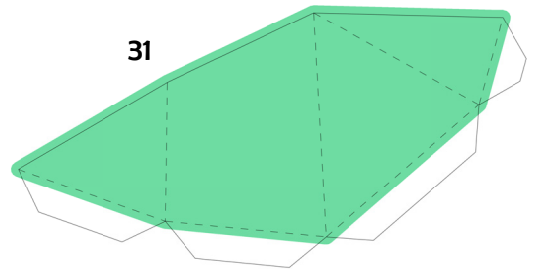
35



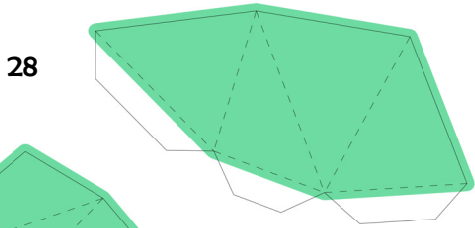
BACK SPINE



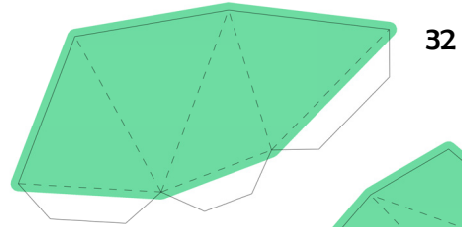
27



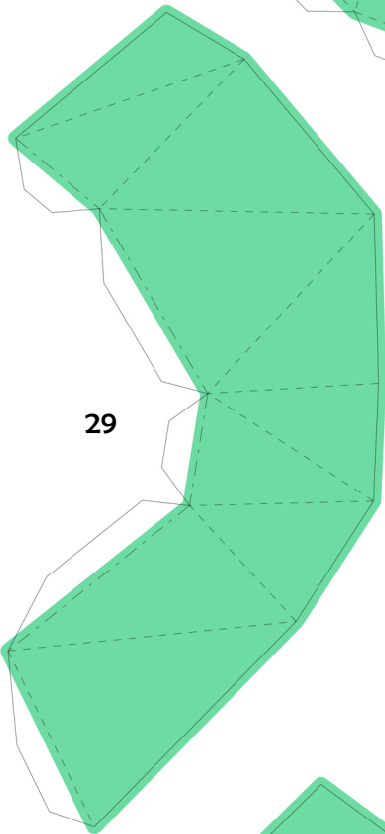
31



28



32

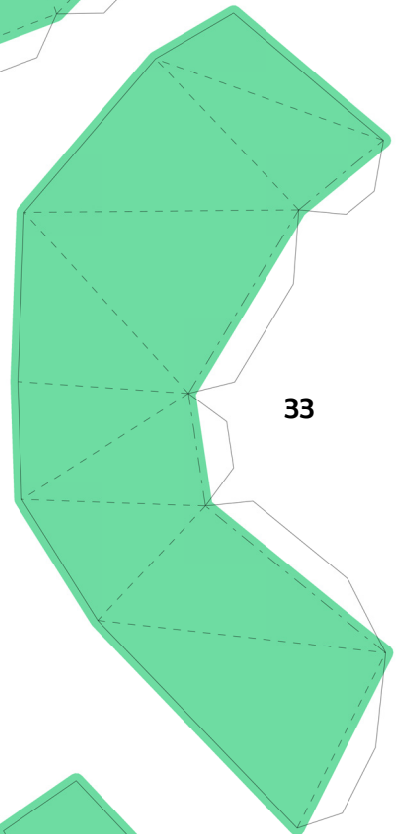


29

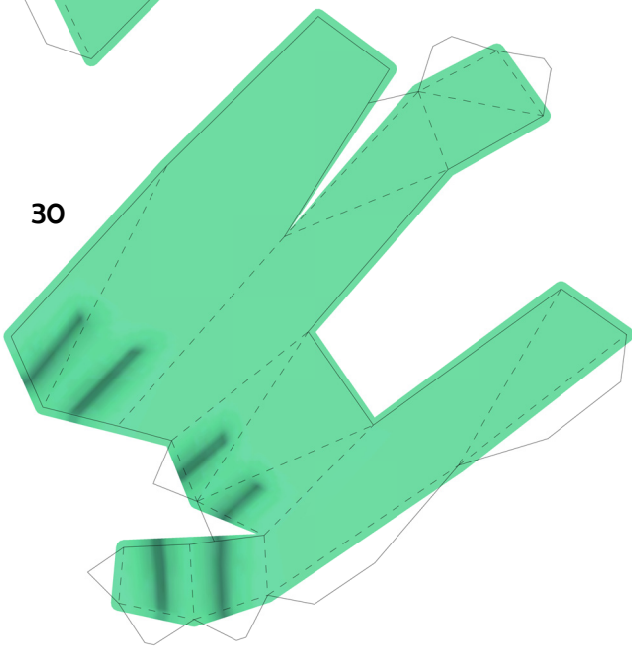
RIGHT LEG

LEFT LEG

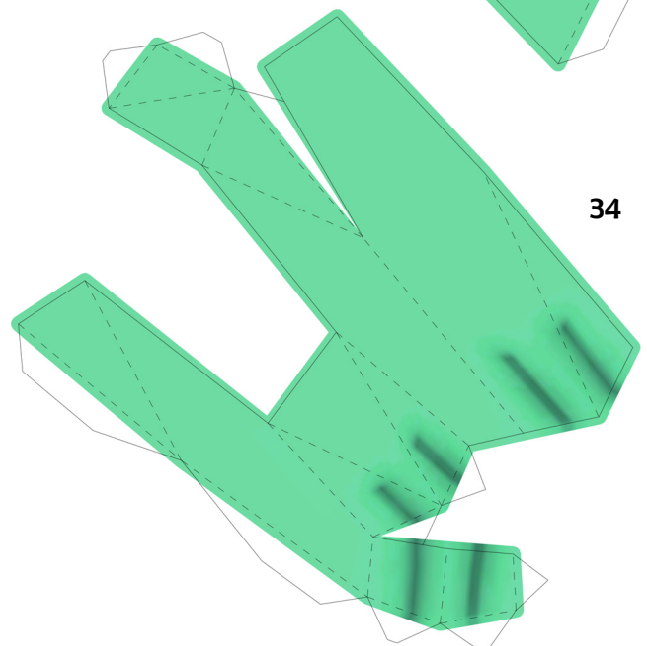
Build from thighs to feet.
(27 thru 30 then 31 thru 34)



33



30



34