



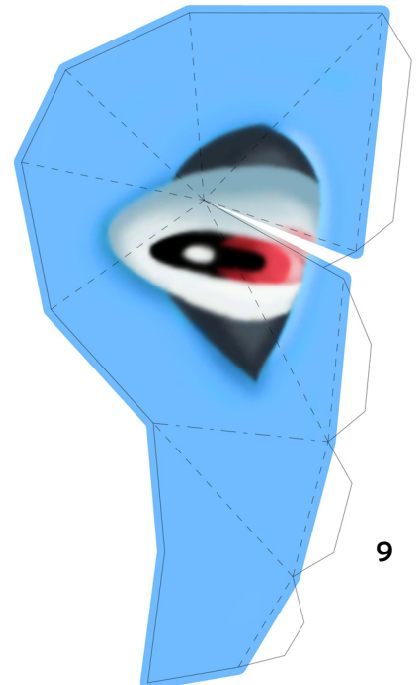
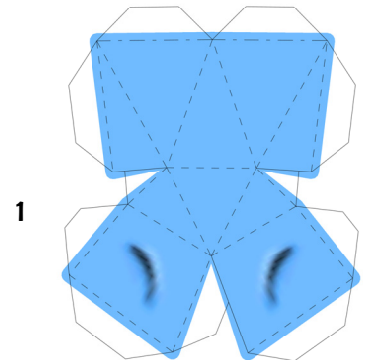
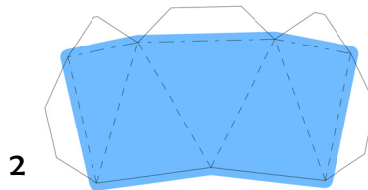
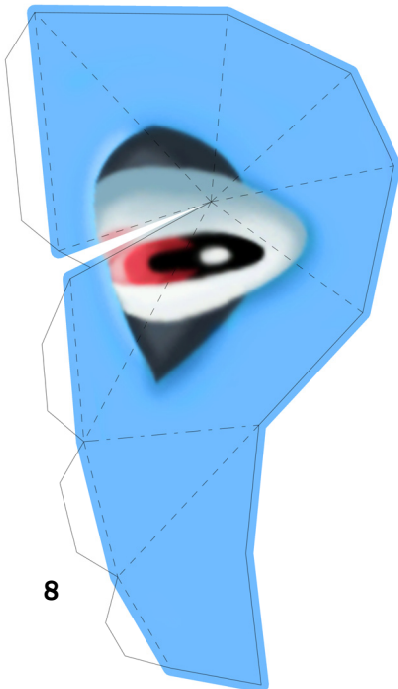
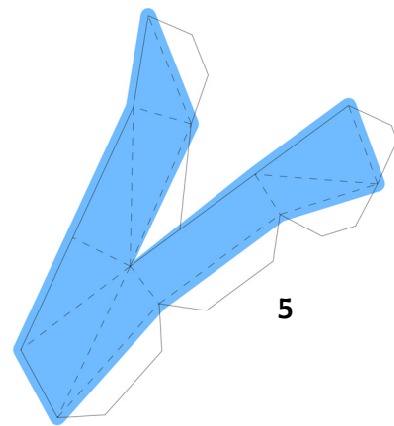
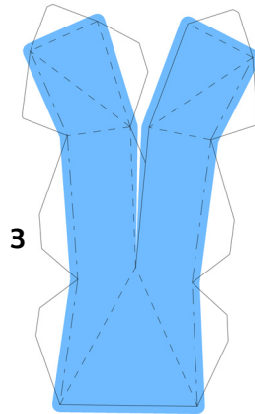
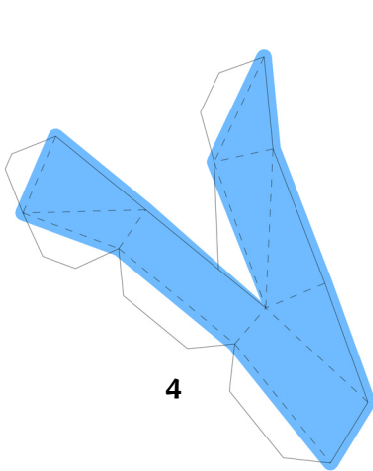
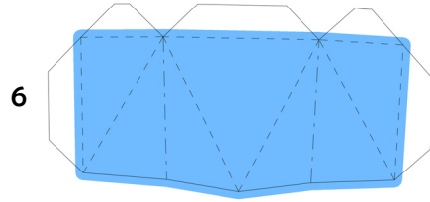
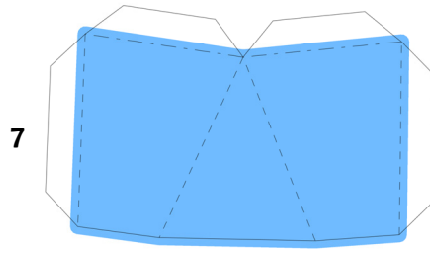
# TOTODILE

3D EDITING BY BRANDON

TEPLATE BY PAPERBUFF

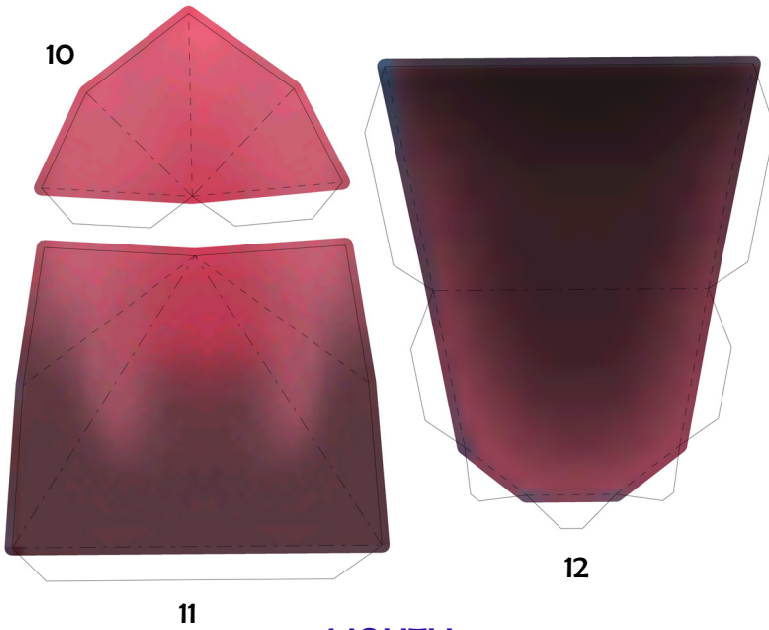
**Paper Pokés**  
*www.pokemonpapercraft.com*

## HEAD AND FACE



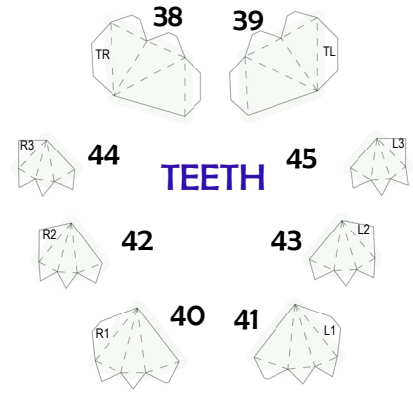
## NOSE

Start with the nose and work your way around it.  
(Let the numbers guide you.)



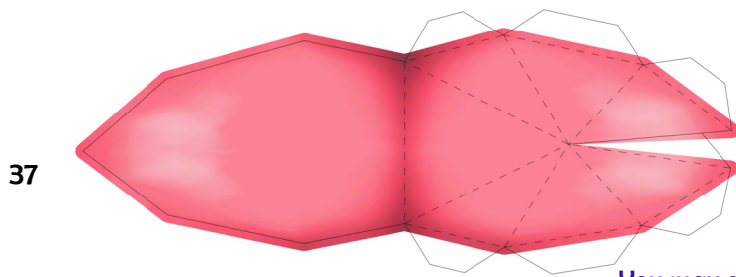
### MOUTH

Build the roof of the mouth by gluing piece 10 to 11.  
 Then glue this piece to the finished part of the head.  
 Then attach the bottom of the mouth (glue 12 to 11).



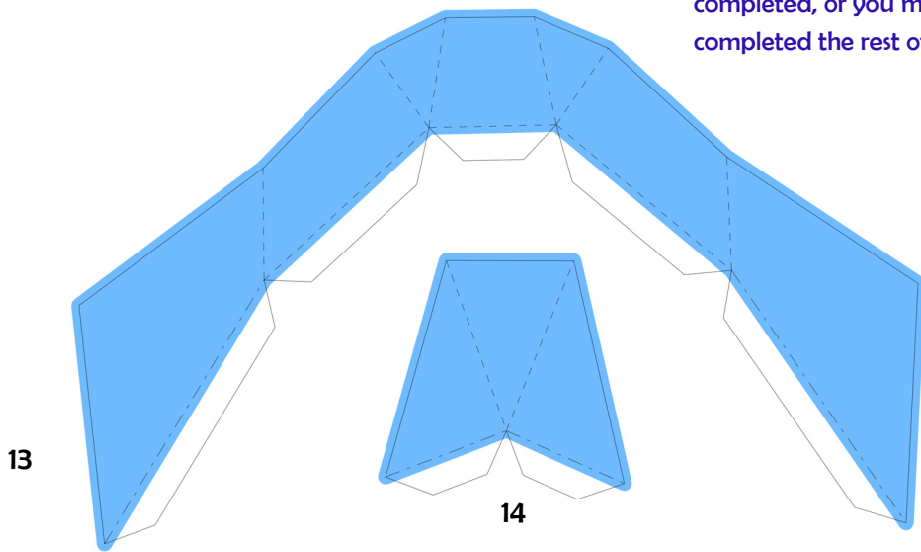
### TEETH

TR - top right  
 TL - top left  
 R1, R2, R3 - bottom right (front to back)  
 L1, L2, L3 - bottom left (front to back)



### TONGUE

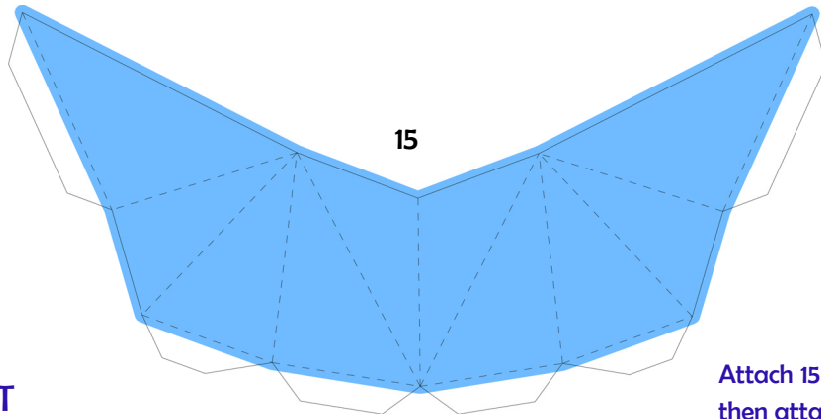
You may assemble and attach the tongue and teeth anytime the head has been completed, or you may wait till you've completed the rest of the model.



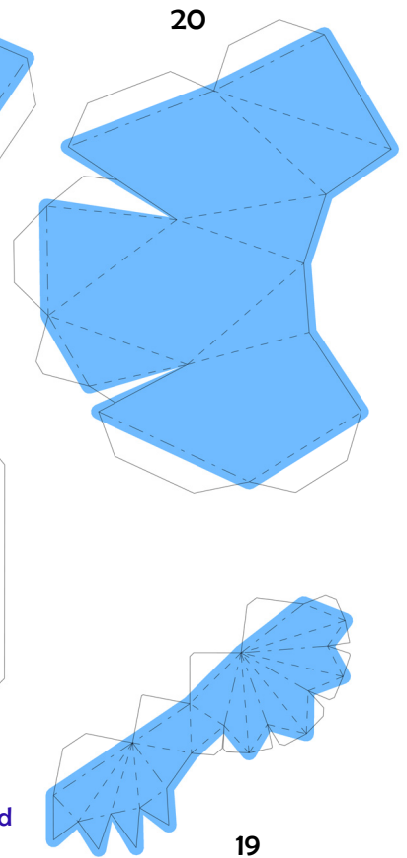
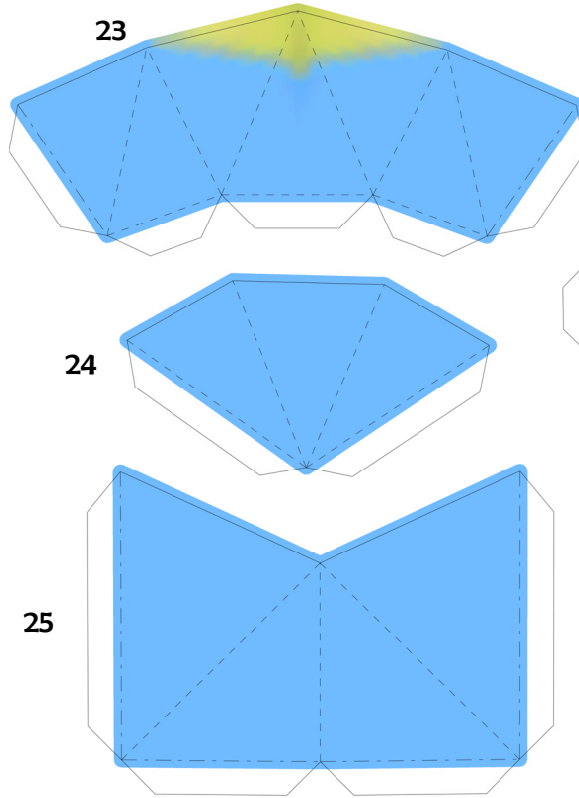
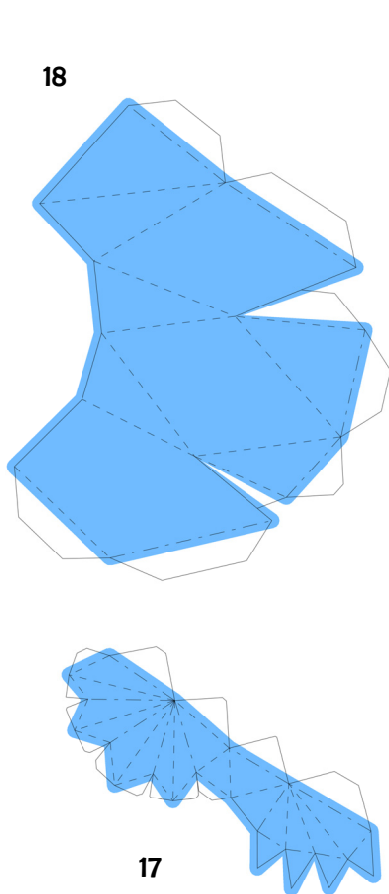
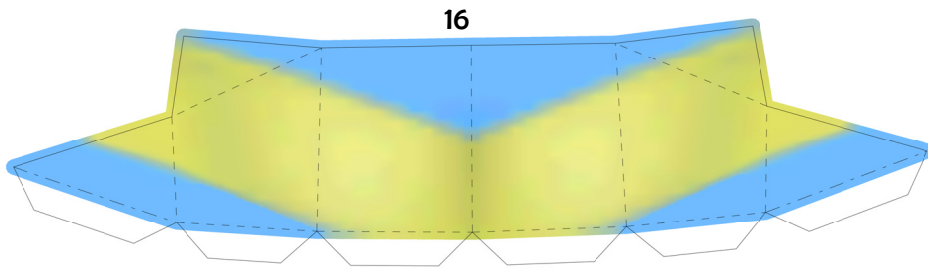
### CHIN

Complete the head by assembling the chin pieces, then move on to the body.

**BODY FRONT**



Attach 15 and 16 to the head, then attach the assembled arms.



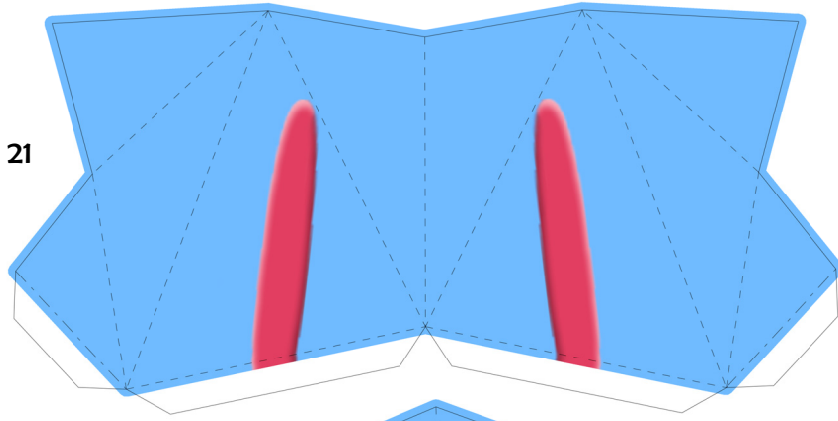
In building the hands, make sure to score and fold the fingers neatly, then fold it over onto itself. Then build the arm around the hand.

**RIGHT ARM AND FINGERS**

**LEFT ARM AND FINGERS**

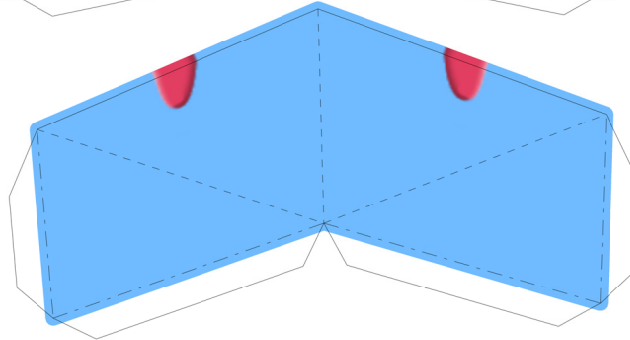
## BODY BACK

21

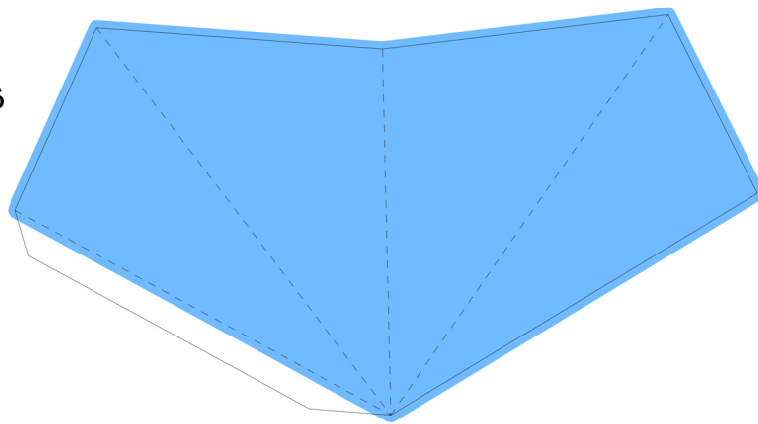


Attach 21 and 22 after attaching the arms. Move on to pieces 23 to 26. Then move on to the legs and feet.

22



26



TAIL

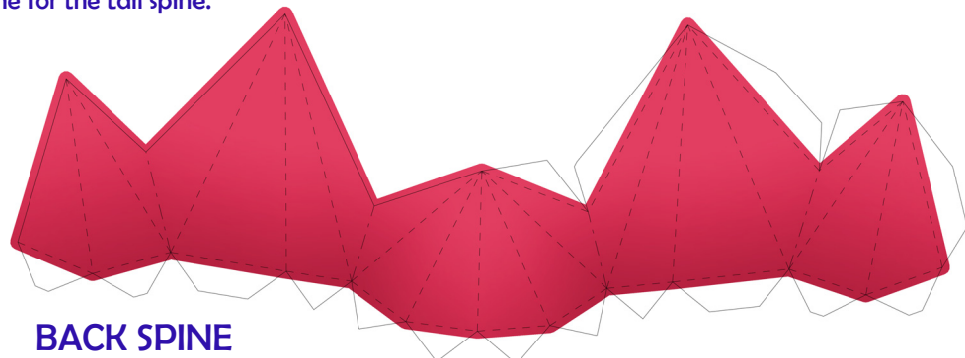
## TAIL SPINE

Score and fold the spines neatly and glue to Totodile's back. Do same for the tail spine.



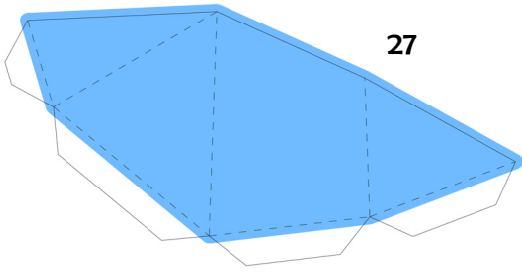
36

35

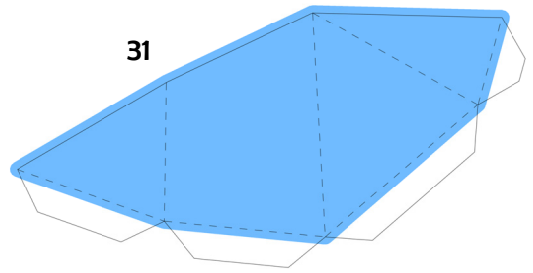


BACK SPINE

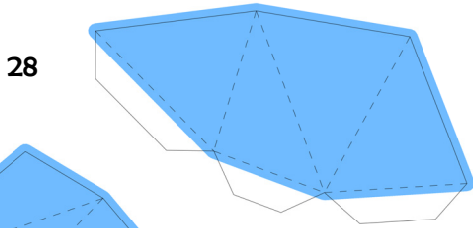




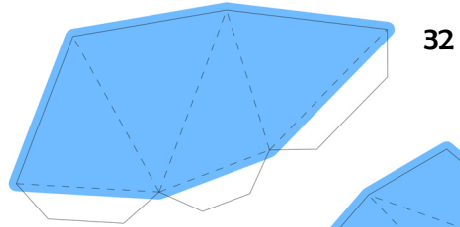
27



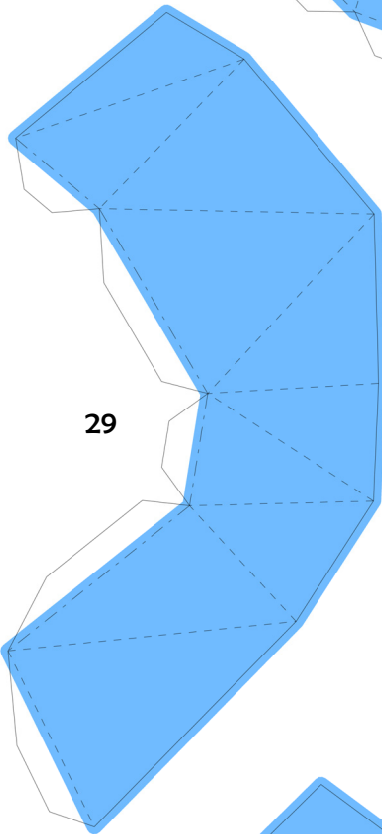
31



28



32

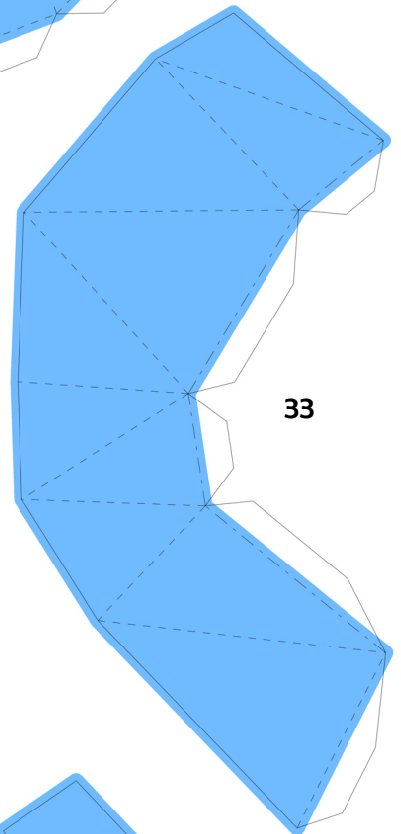


29

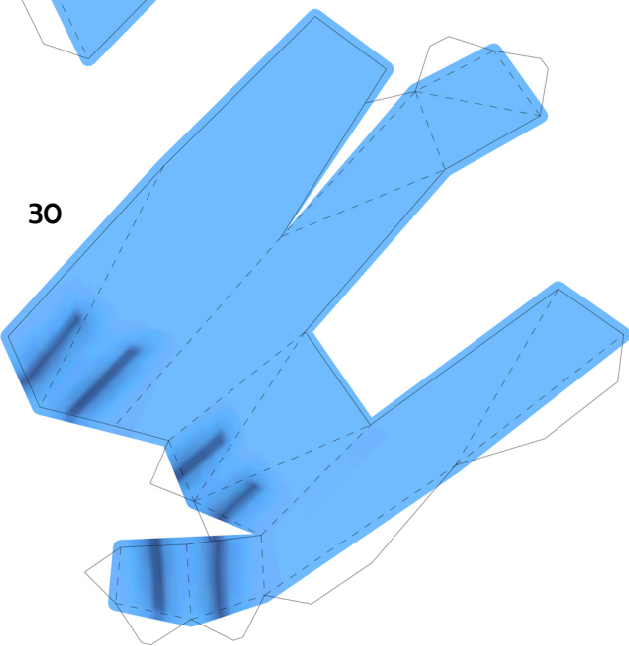
**RIGHT LEG**

**LEFT LEG**

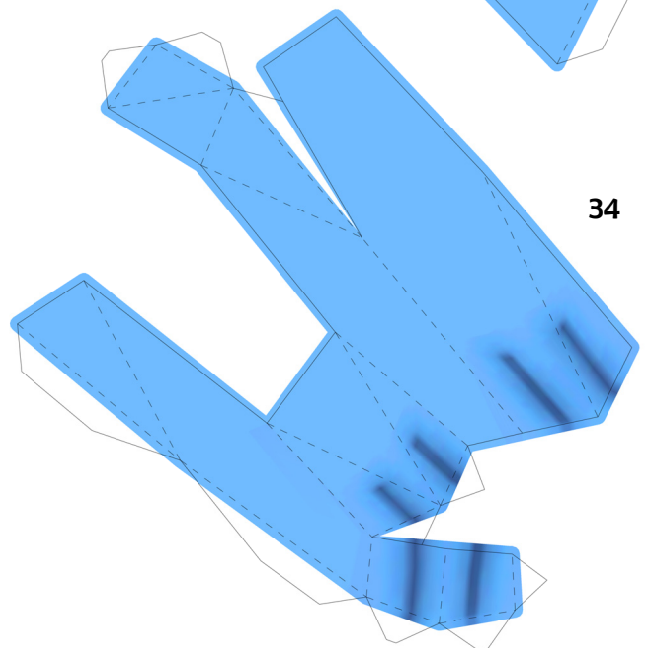
Build from thighs to feet.  
(27 thru 30 then 31 thru 34)



33



30



34