

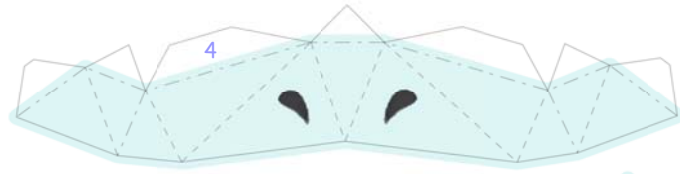
# PSYDUCK

VERSION 2

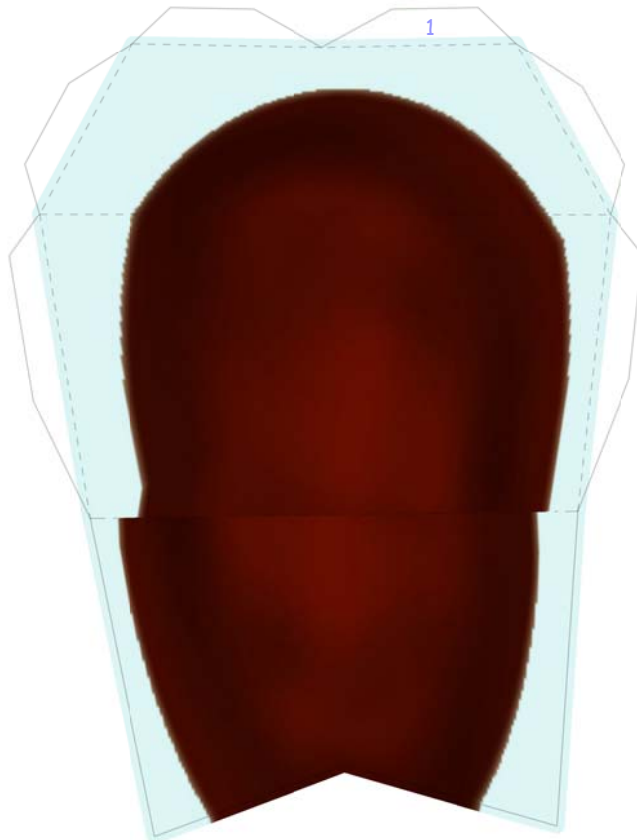
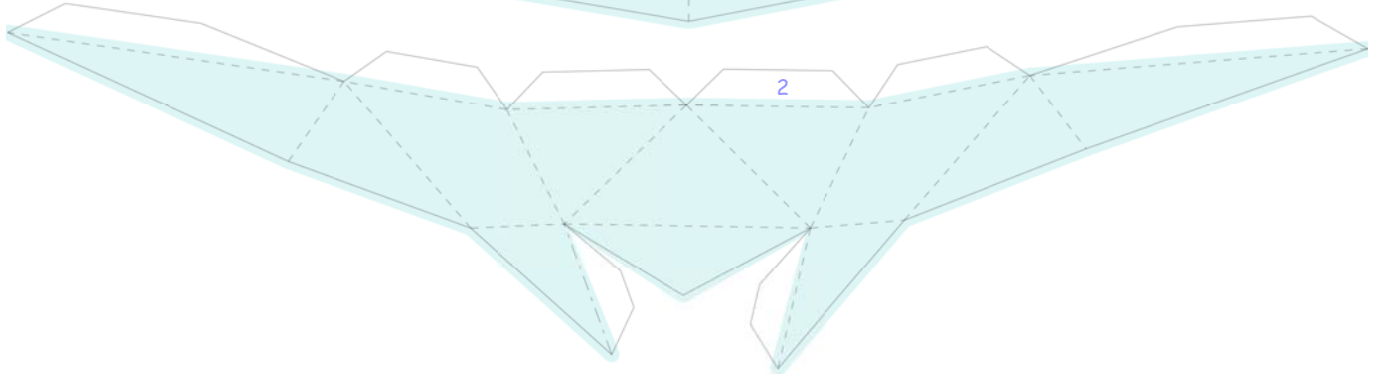
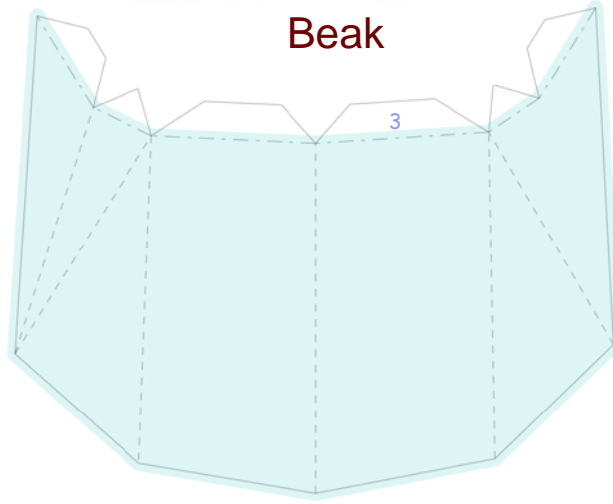


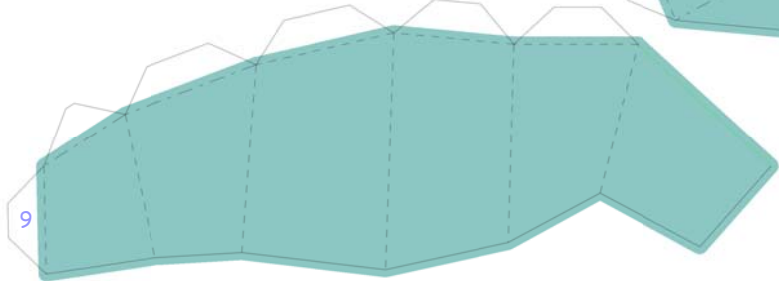
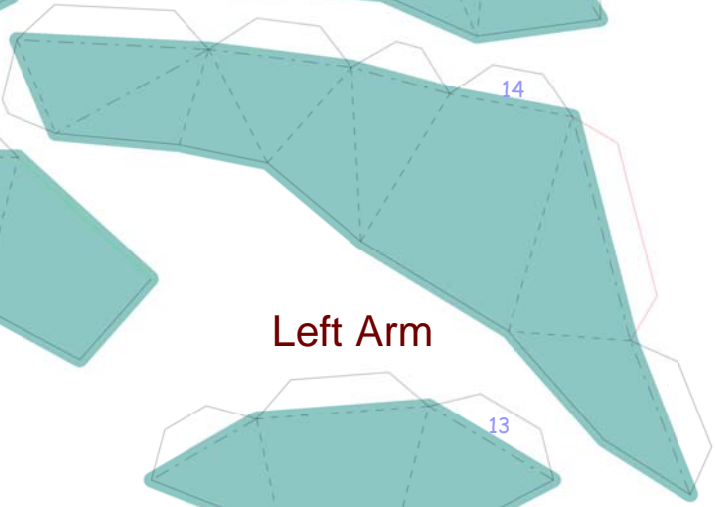
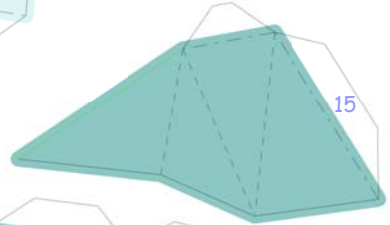
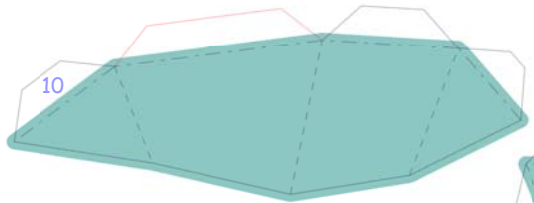
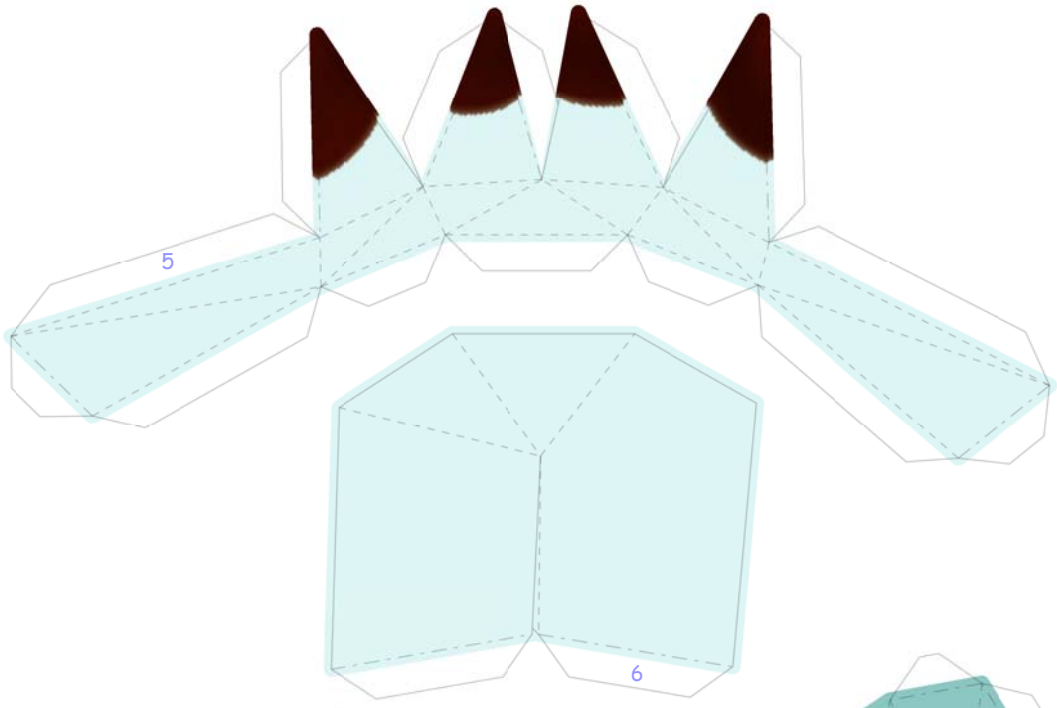
**PaperPokés**  
[www.pokemonpapercraft.com](http://www.pokemonpapercraft.com)

---



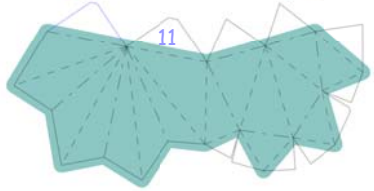
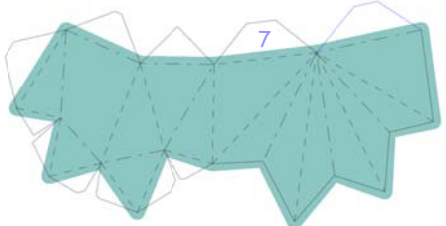
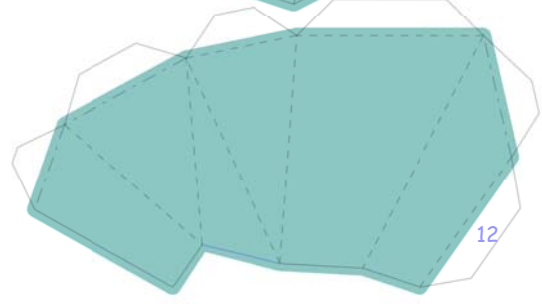
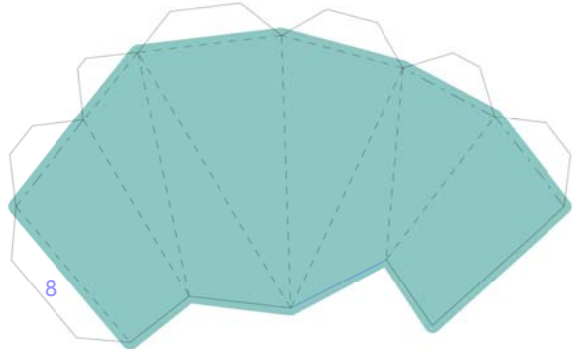
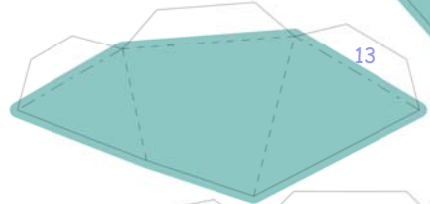
Beak

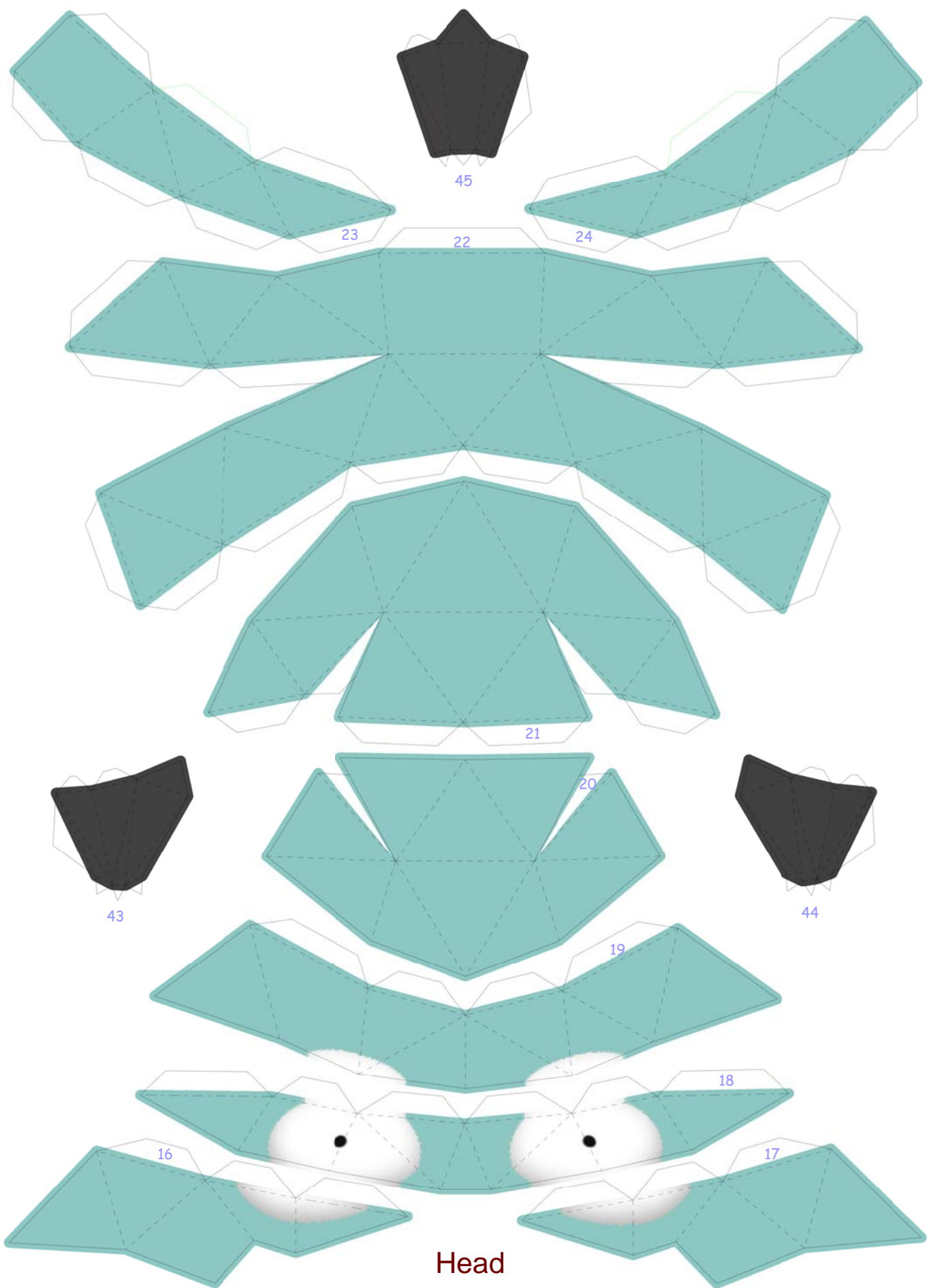




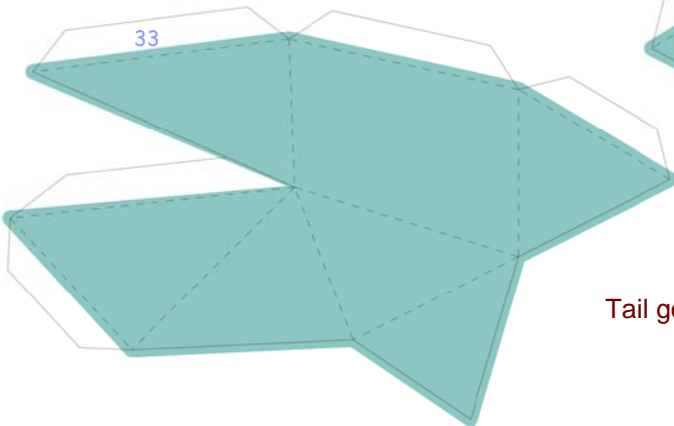
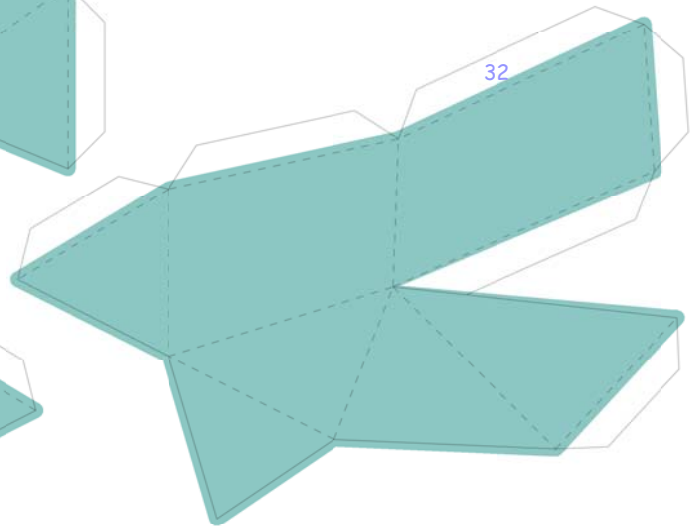
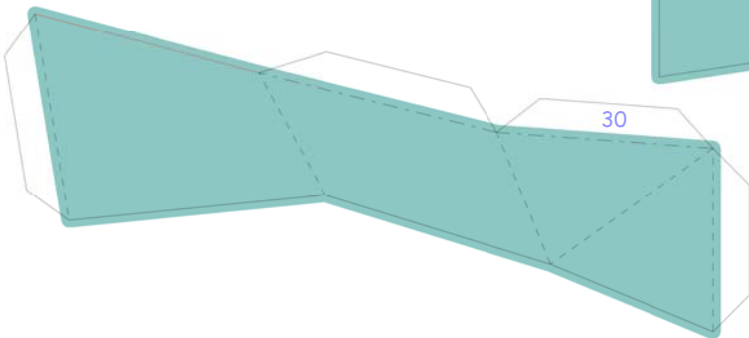
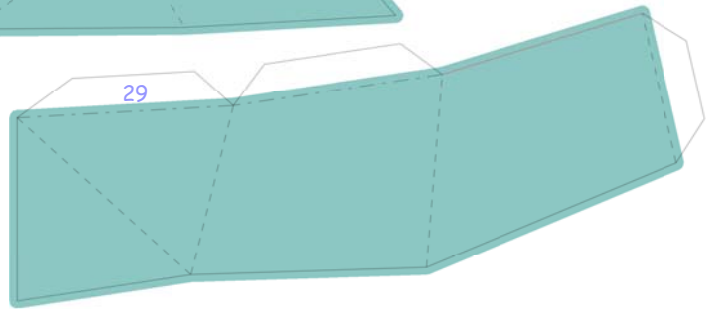
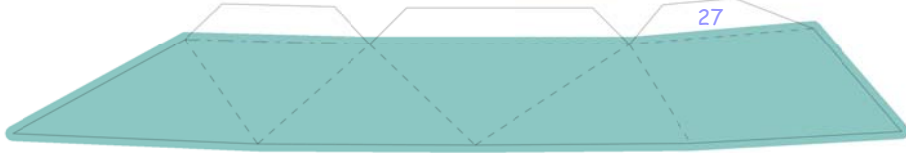
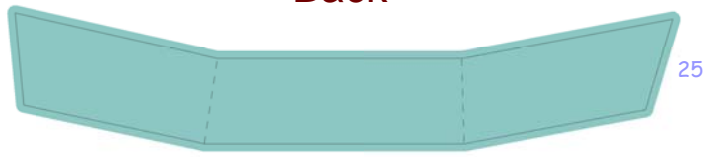
Left Arm

Right Arm

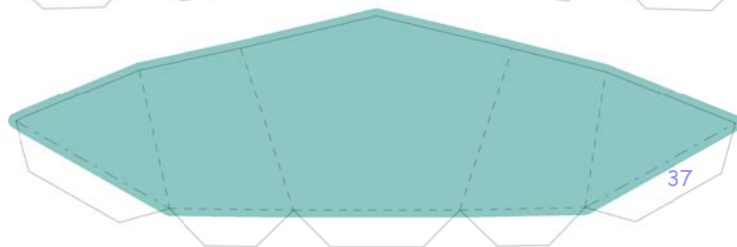
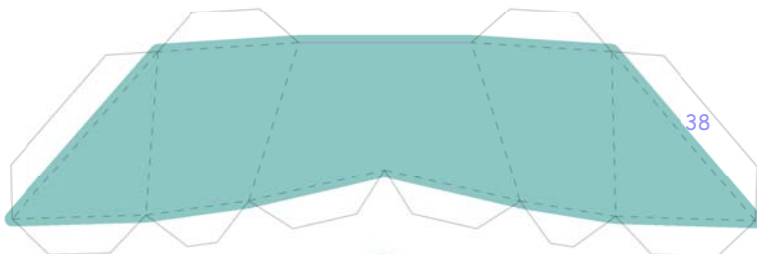




# Back

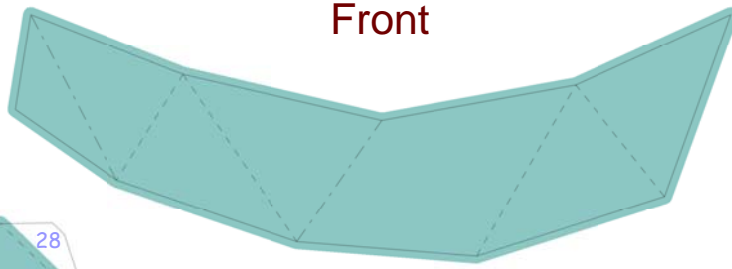


Tail goes here

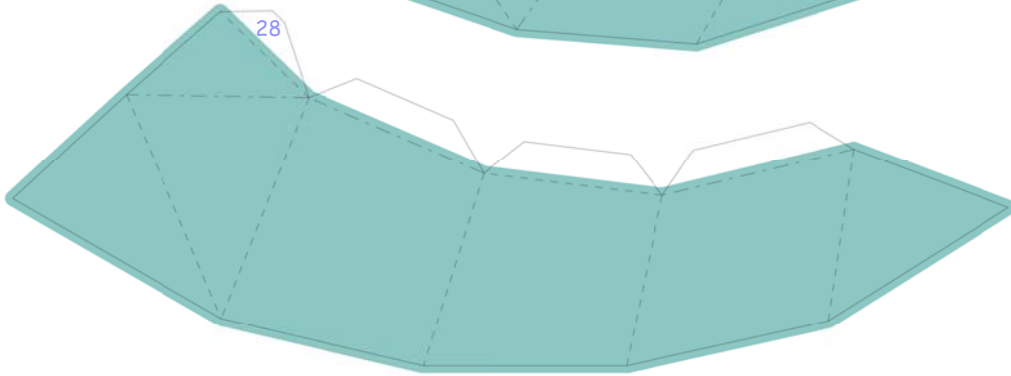


# Front

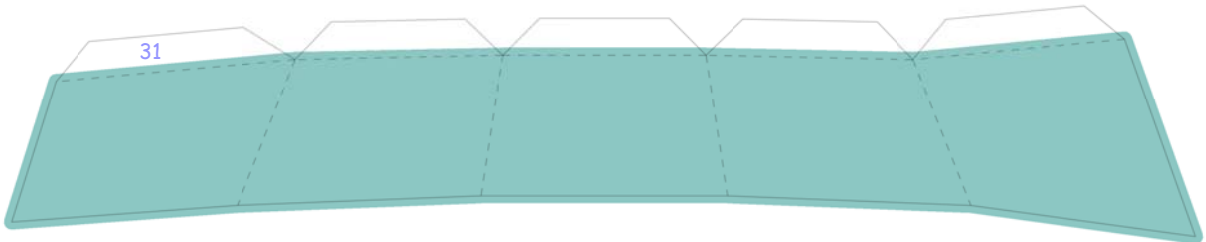
26



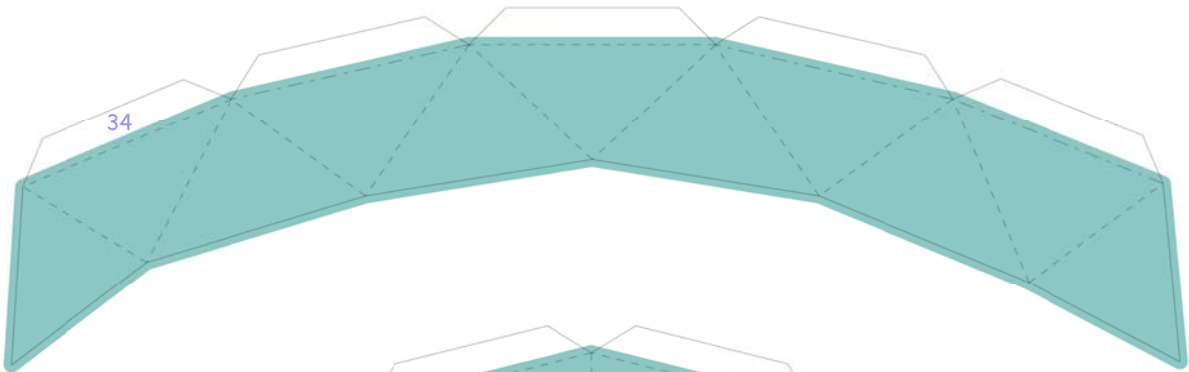
28



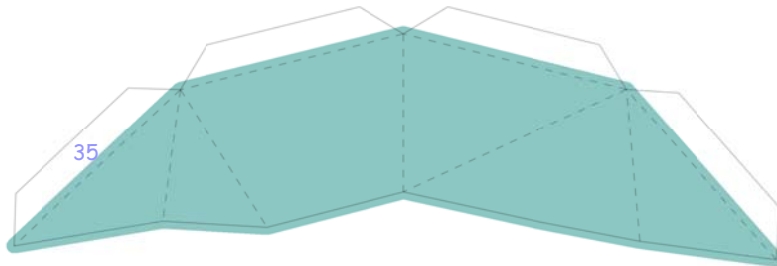
31



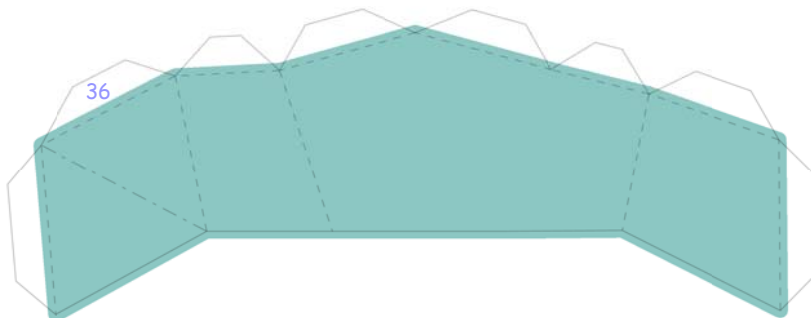
34



35



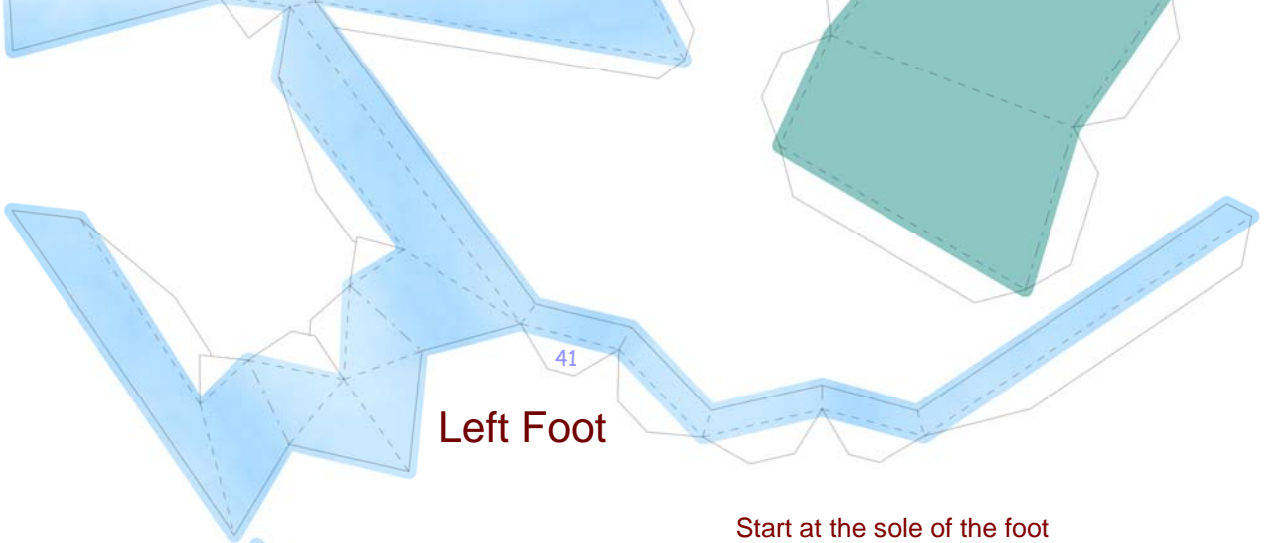
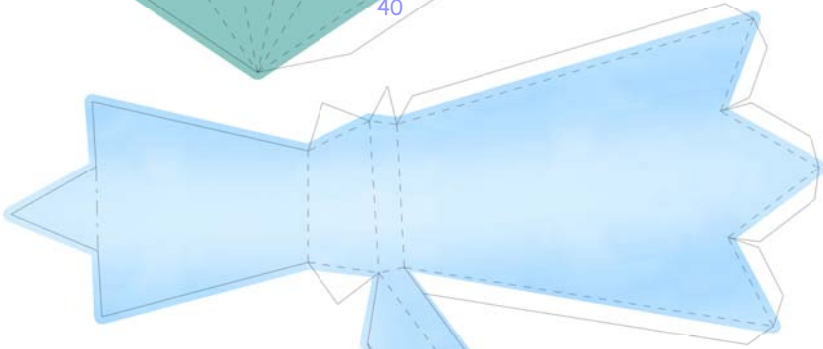
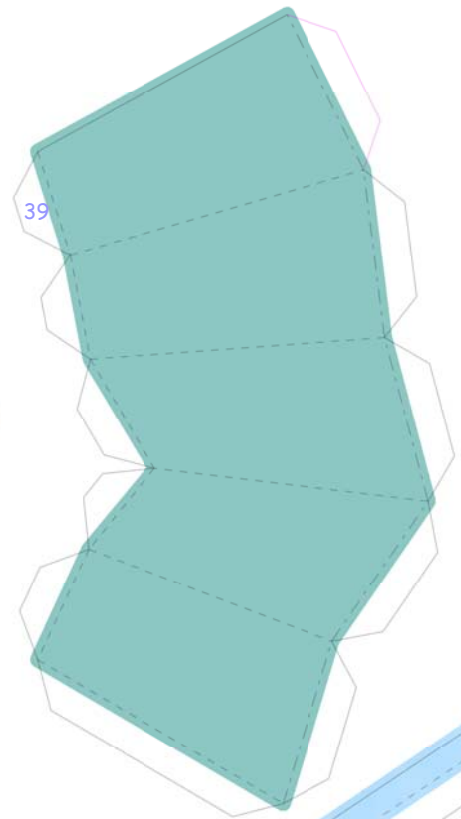
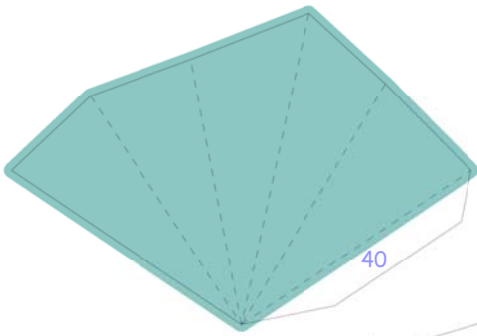
36





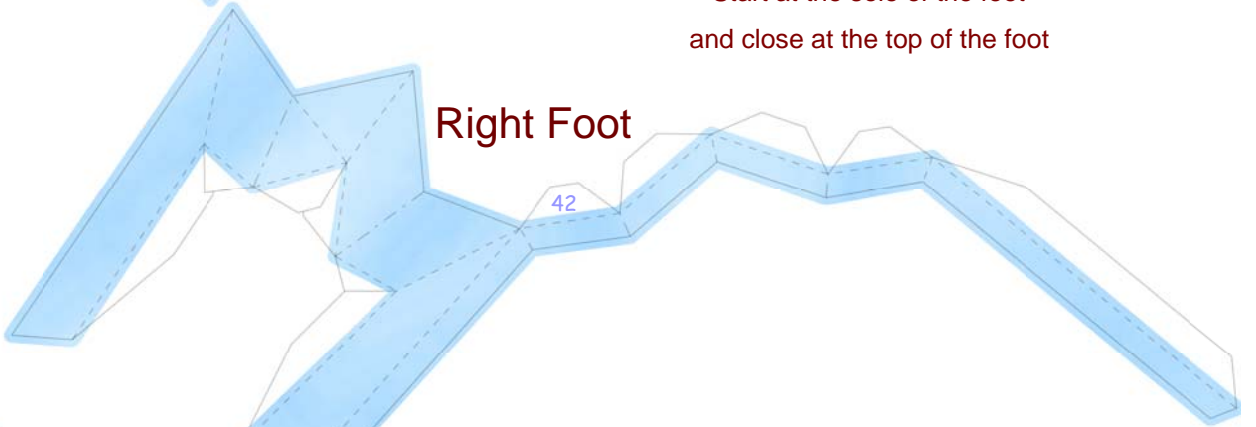
## Tail

Close body at tail  
by wrapping the tip  
around the base part



## Left Foot

Start at the sole of the foot  
and close at the top of the foot



## Right Foot

