

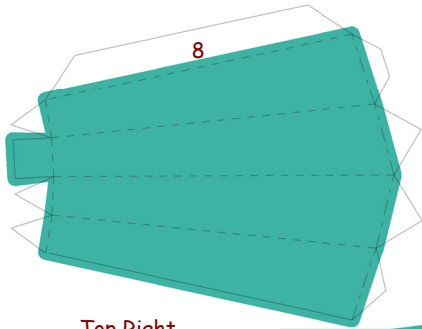
# Horsea

By PMF

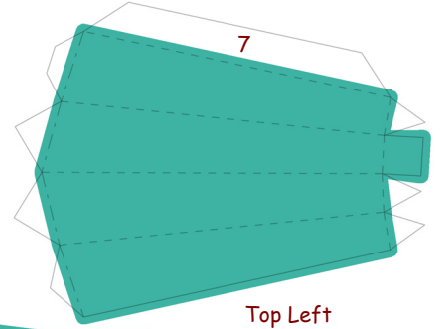


**PaperPokés**  
*www.pokemonpapercraft.com*

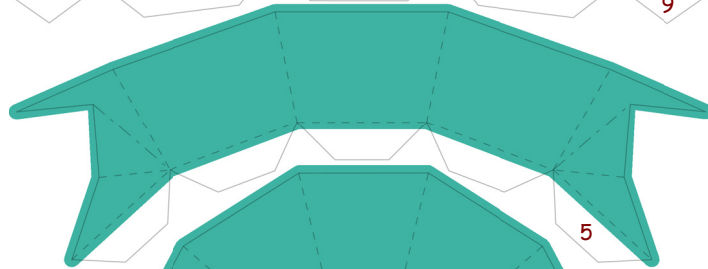
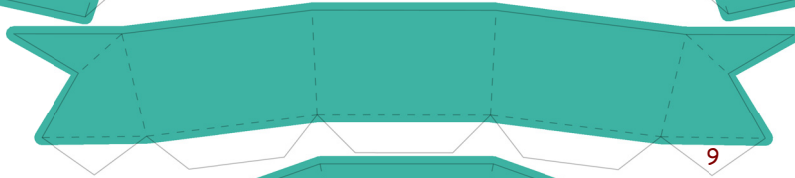
---



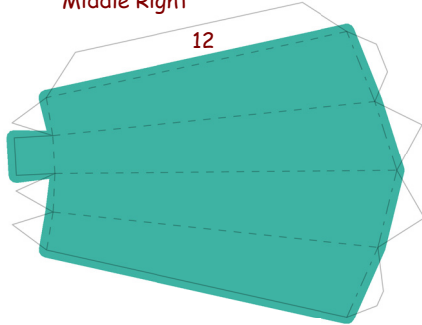
Top Right



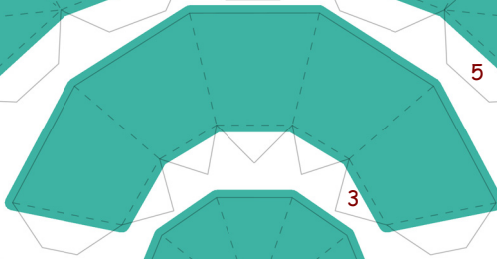
Top Left



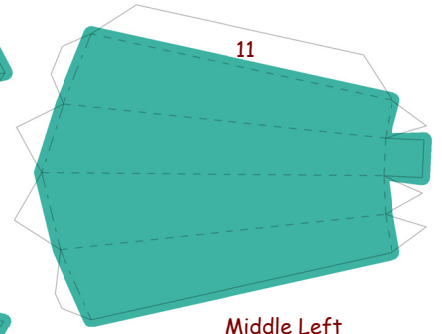
Middle Right



12

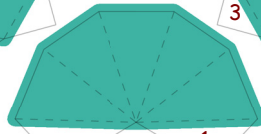


3

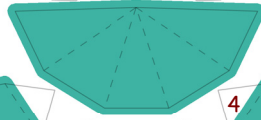


11

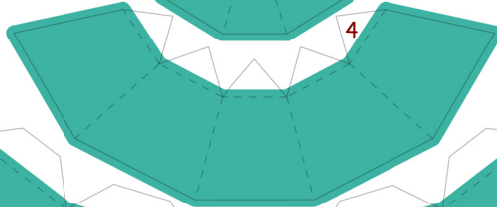
Middle Left



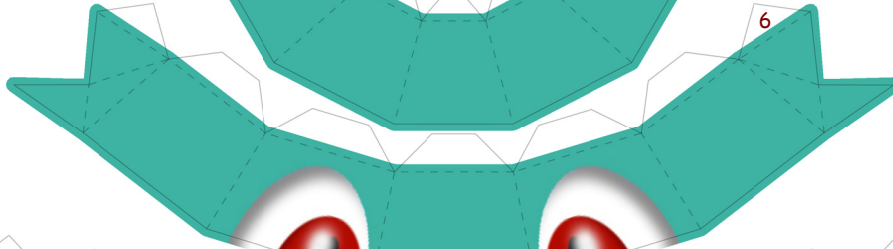
1



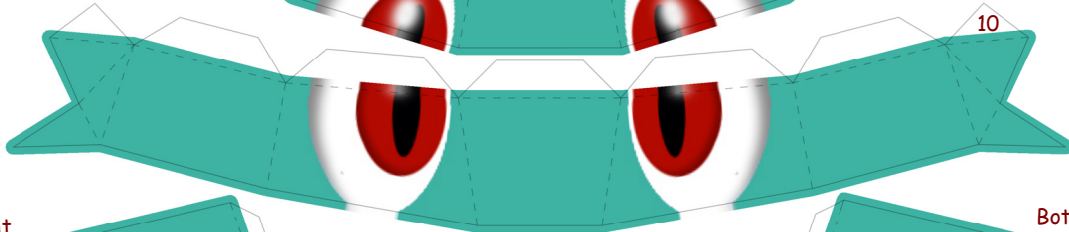
2



4

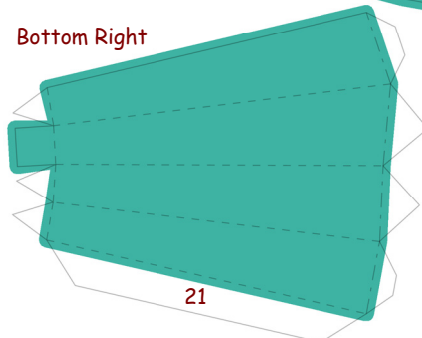


6



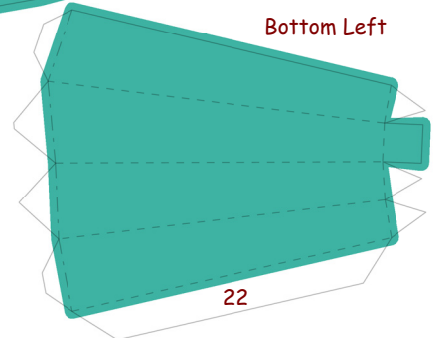
10

Bottom Right

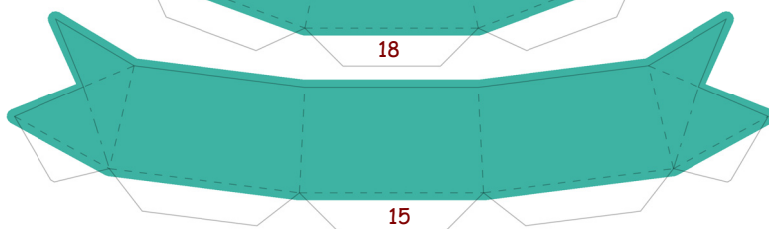
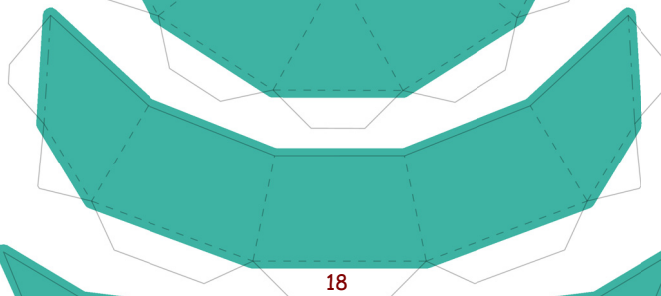
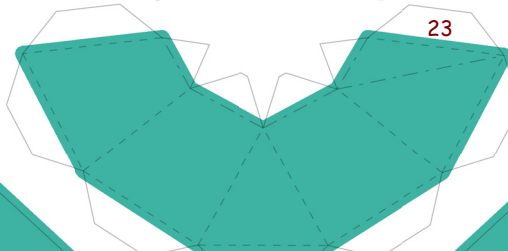
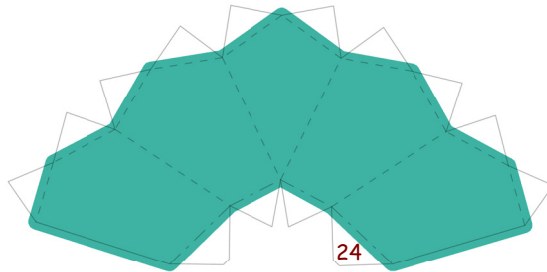
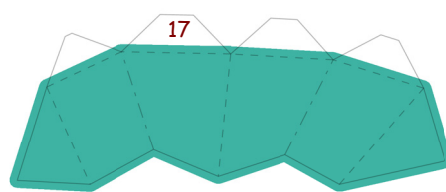
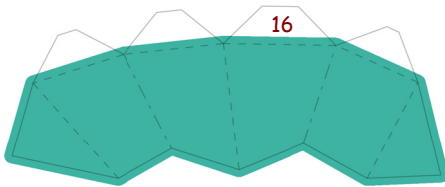
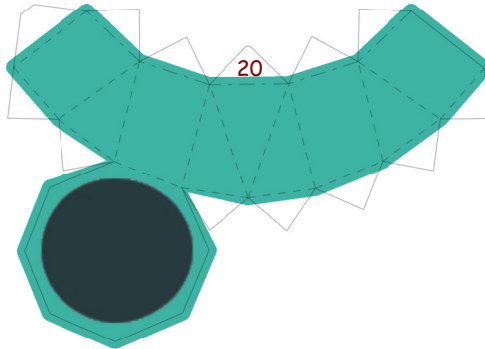
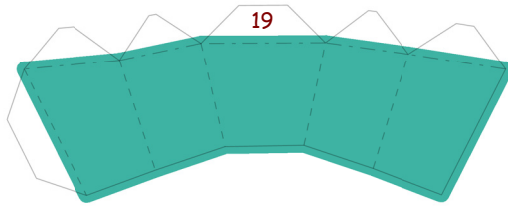
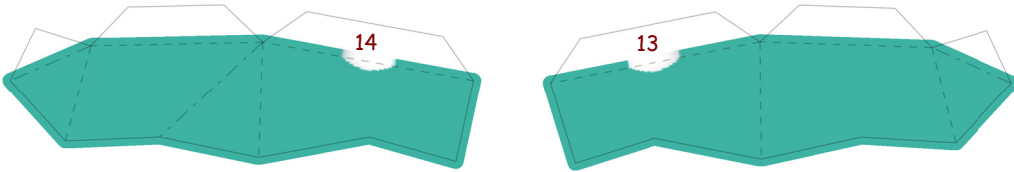


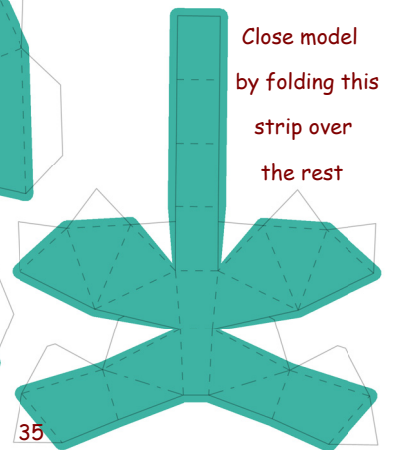
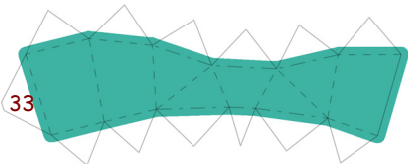
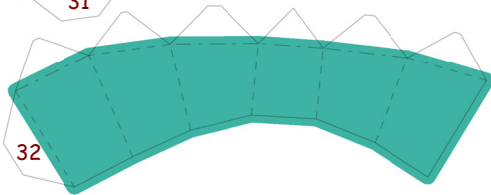
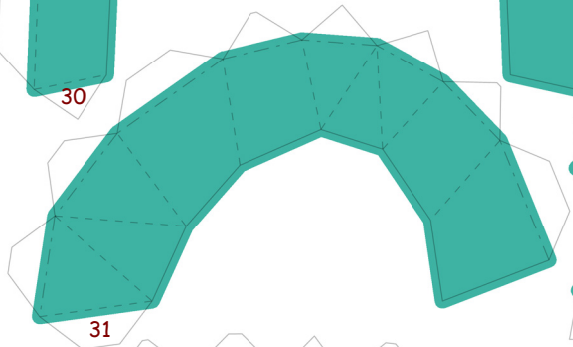
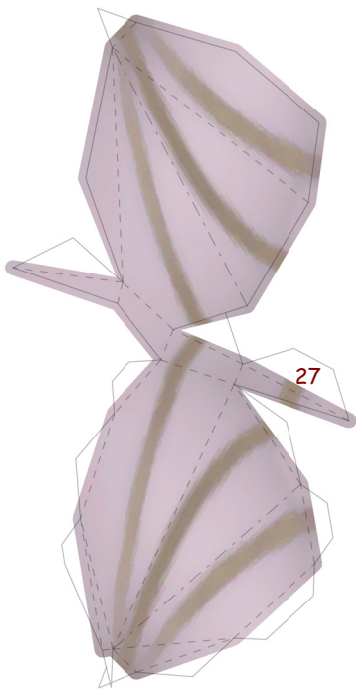
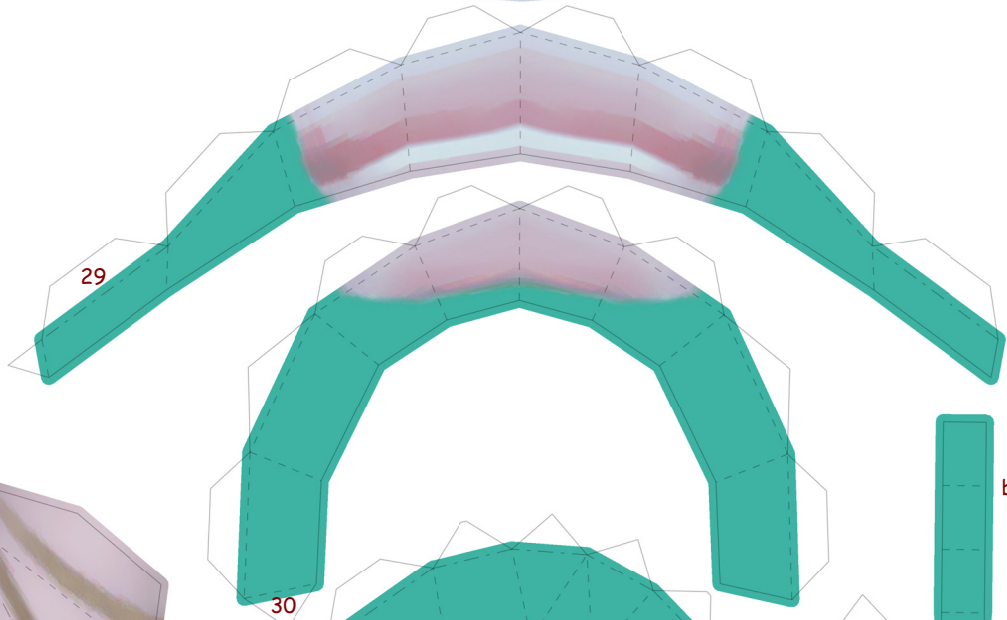
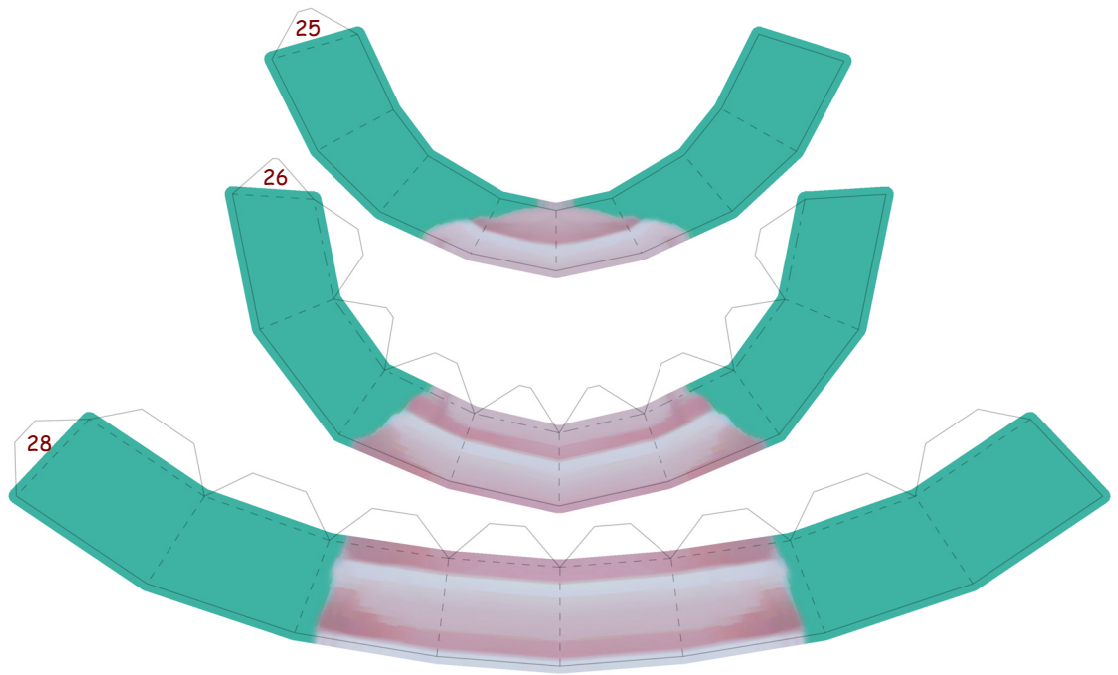
21

Bottom Left



22





Close model  
by folding this  
strip over  
the rest

Insert coin/weight into  
tail tip before closing

