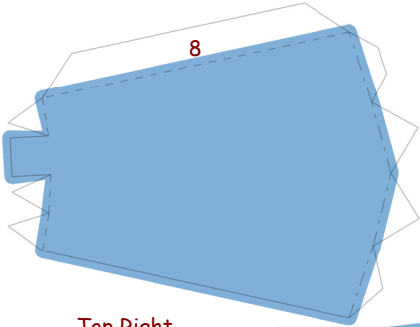


Horsea

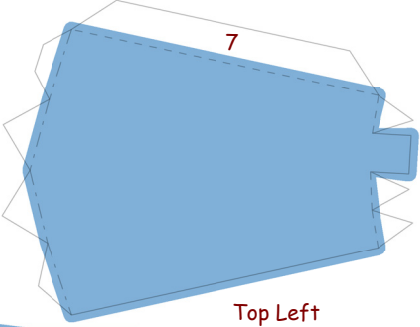
By PMF



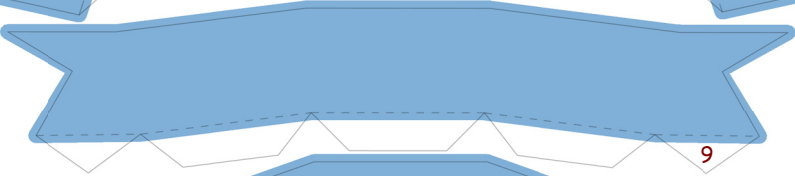
PaperPokés
www.pokemonpapercraft.com



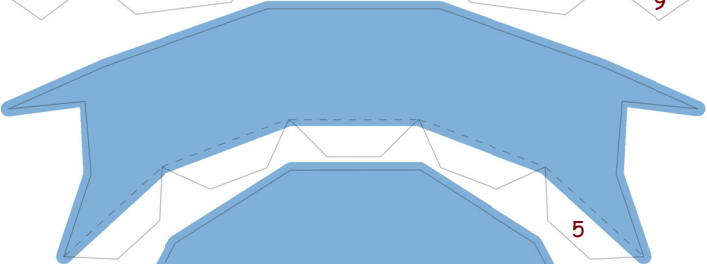
Top Right



Top Left

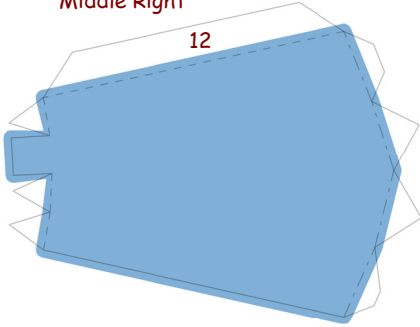


9



5

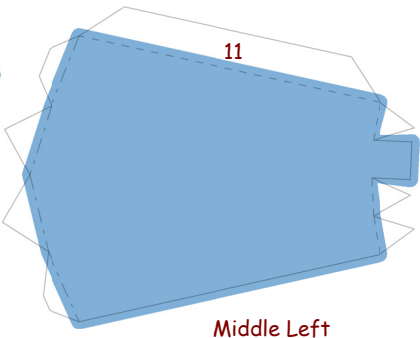
Middle Right



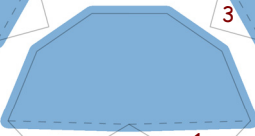
12



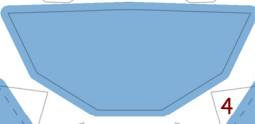
3



11

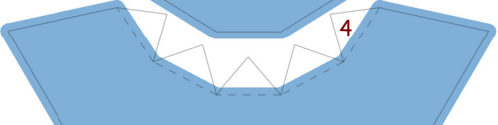


1



2

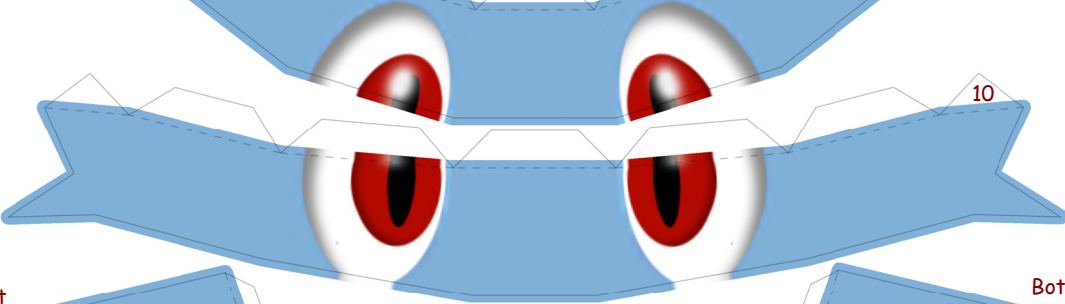
Middle Left



4

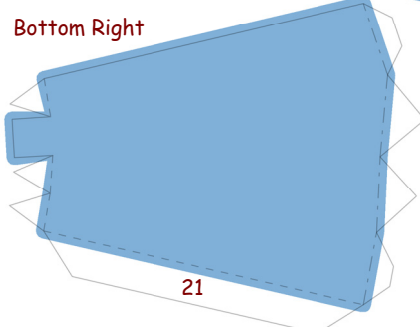


6

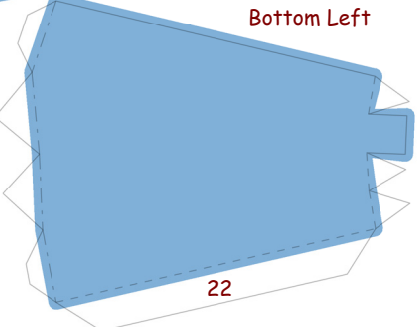


10

Bottom Right

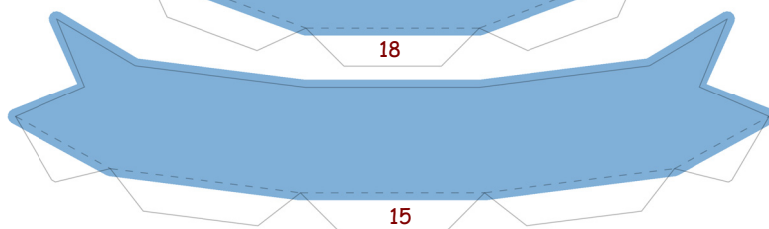
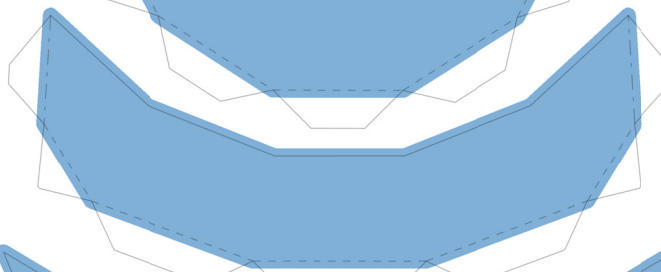
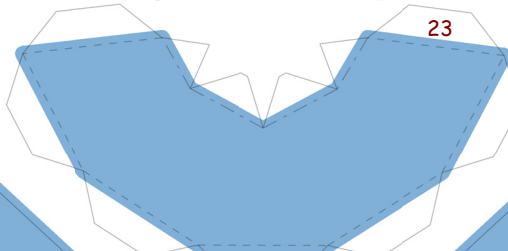
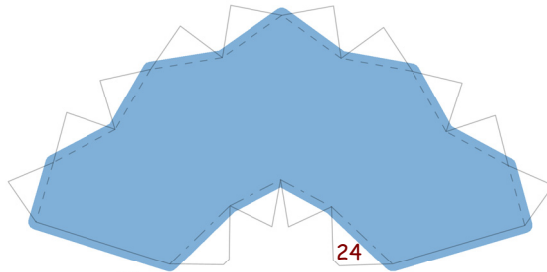
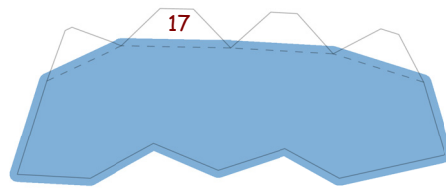
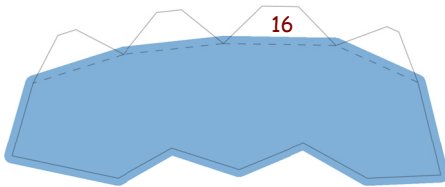
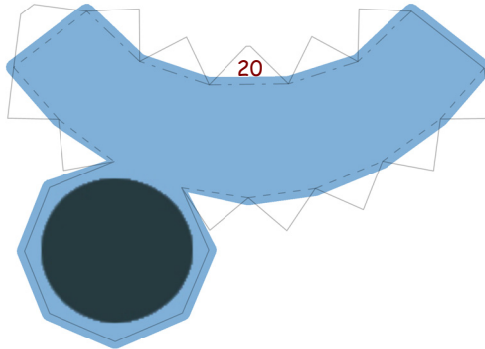
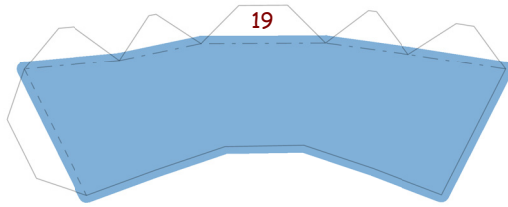
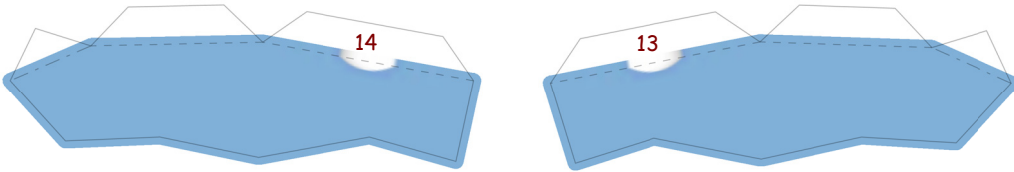


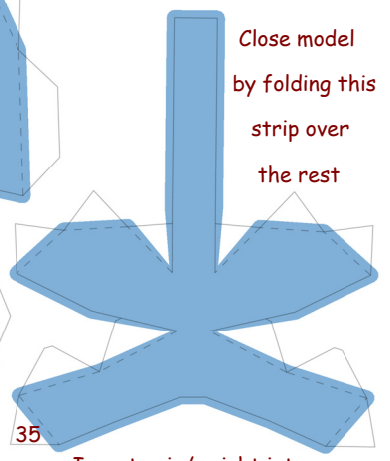
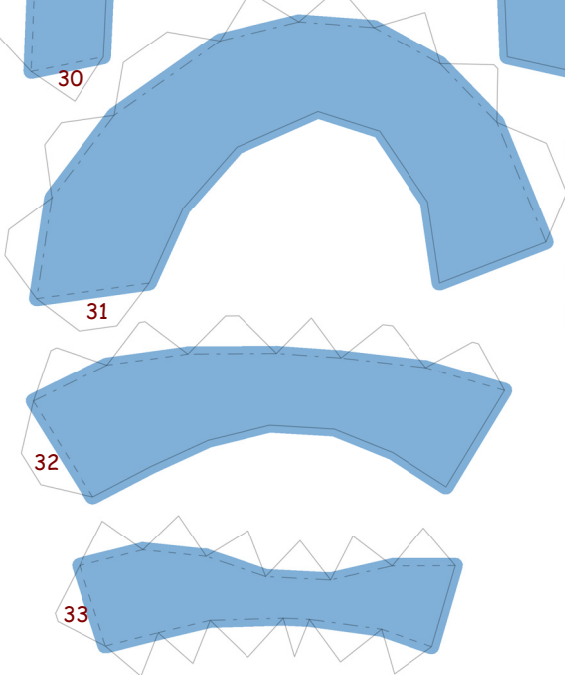
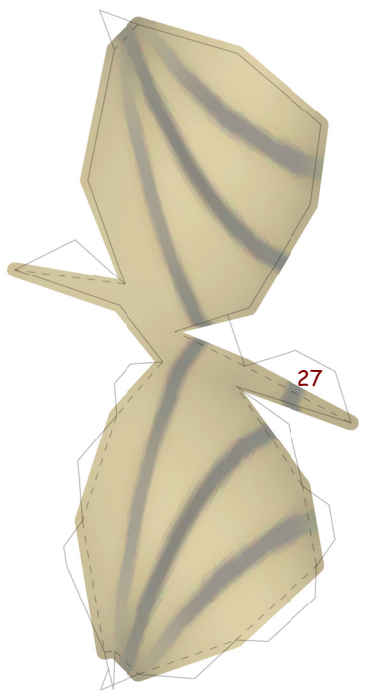
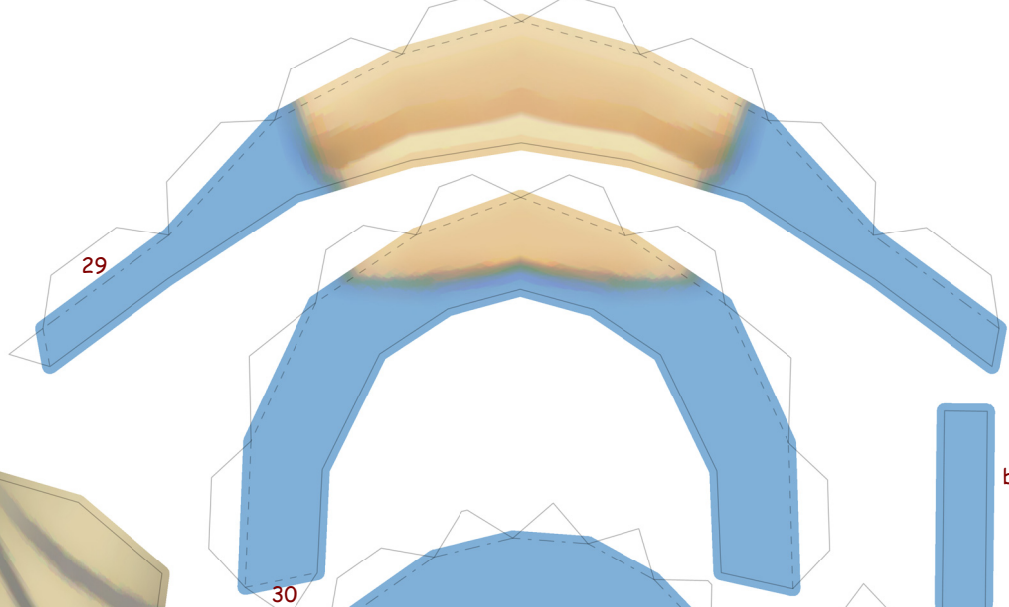
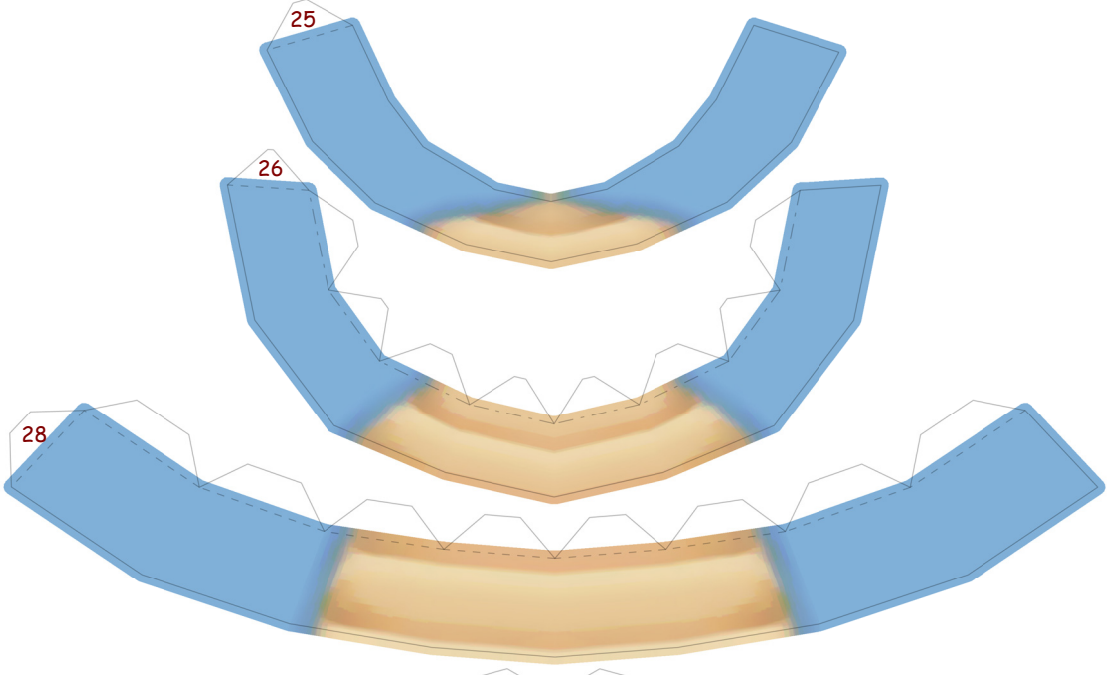
21



22

Bottom Left





Close model
by folding this
strip over
the rest

Insert coin/weight into
tail tip before closing

